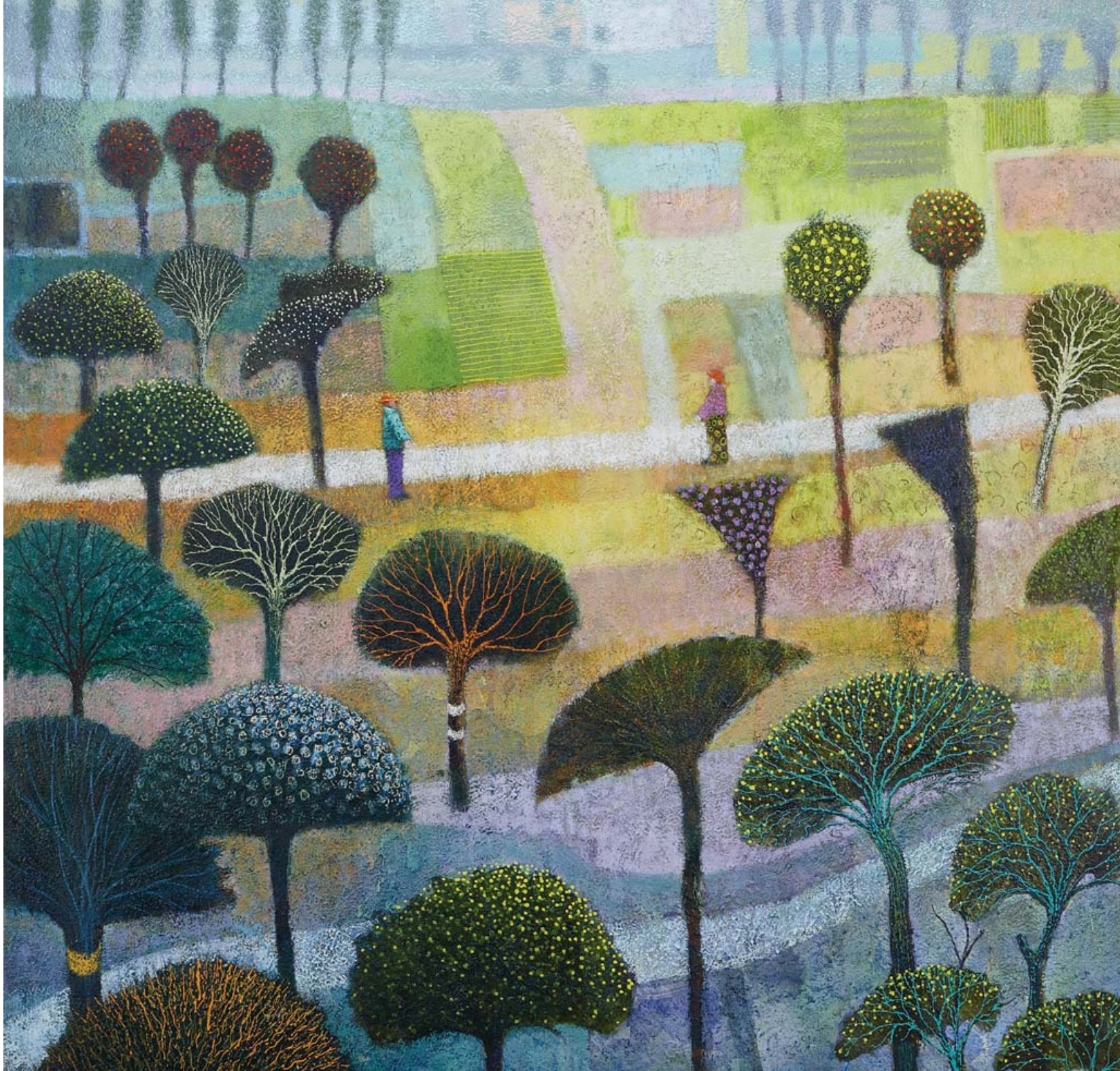


SIMON GARDEN RWA





Caretaker, 63 x 31cm, Oil on Panel

Where does Simon Garden live? The prosaic answer is Bristol, but the more accurate response might be that, most of the time, he lives in his creative imagination.

You don't get many vast fan shaped trees or conical wooded hills around that city. But you do get them on the canvases in Simon Garden's new body of work.

Simon is firmly established as one of the UK's foremost purveyors of otherworldly landscape painting. It is a long and fascinating tradition, stretching from Bruges to Max Ernst, one that rejects the straightjacket of classical realism and also the pure formalism of abstract work.

If art is a channel to a higher dimension, these fantastical paintings are a fast track to this zone, conjuring crazy mystical scenarios, yet somehow remaining anchored in everyday life.

This is what makes them so very exciting.

This new collection is absolutely brimming with ideas. Amongst the paintings there are some wonderful, almost conventional, landscapes. Although his work depicts an ethereal nether-world, there is still an unmistakably English quality to it. 'Lane' is a beautiful impressionist style work, while 'Yellow Table' has a loose gossamer quality-but these works are far outnumbered by Simon's enigmatic and uncanny visions.

Take 'Swing'. Here, a giant- slightly terrifying- tree dwarfs the tiny human figure swinging off its branches. It's one of many works to feature trees, a common Simon Garden motif. There are also a lot of houses- another of the artists' preoccupations. But Simon doesn't take a conventional approach to architecture. In 'Spirit Ship', for example, a series of small houses replace the sails on the boat. The companion piece to this is even more 'out there'. In 'Two Ships' the sails have been replaced by a riot of giant trees and flowers. It's an outstanding work.

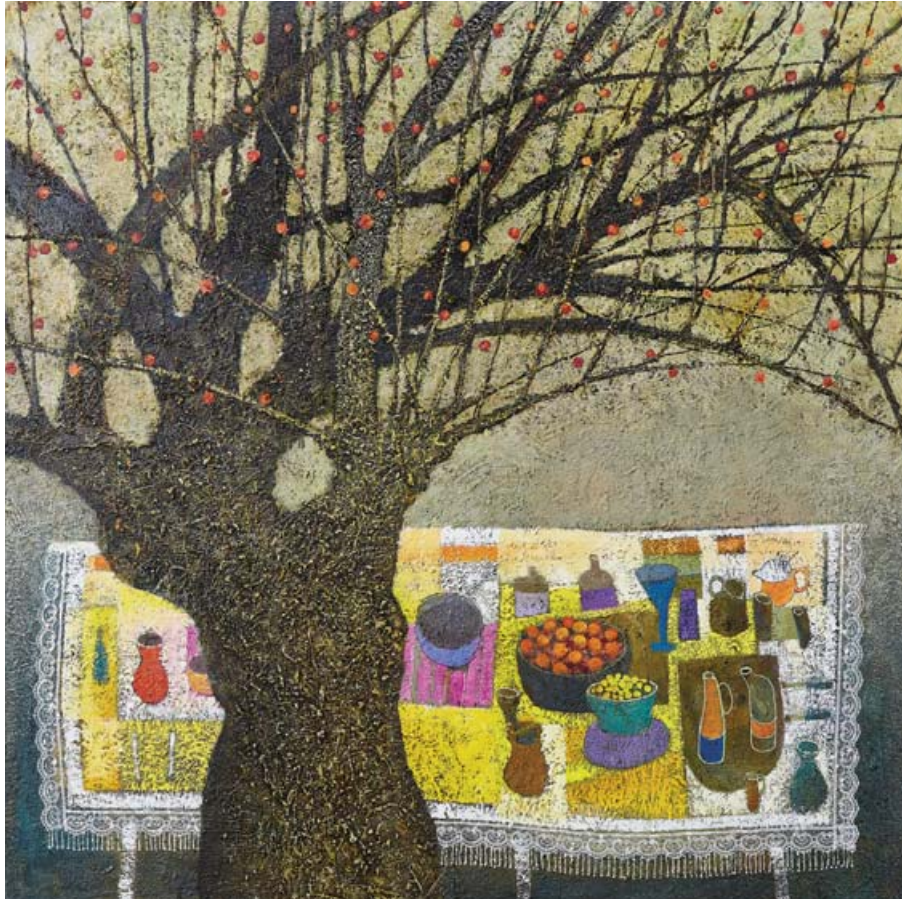
While admiring the imaginative force of these textured paintings, it is easy to overlook the impressive technique. Much of the power comes from the quality of the paint itself, which Simon creates from scratch. Following the techniques of the Old Masters he combines oil with salt, sand and hot water then shakes it until it emulsifies, before finally boiling it. The result is a viscous mix of subtle colours and textures- the perfect complement to those dream like, other-worldly scenarios.

We are delighted that Simon is returning to the Catto for his third show.

This is a small selection of paintings from the show. Please visit www.cattogallery.co.uk to see the full exhibition.



Winter Landscape, 90 x 123cm, Oil on Panel





The Pointers, 60 x 123cm, Oil on Fresco Panel



Country Church, 60 x 123cm, Oil on Panel



Spirit Ship, 123 x 60cm, Oil on Fresco Panel



Sleeping King, 90 x 64cm, Oil on Panel



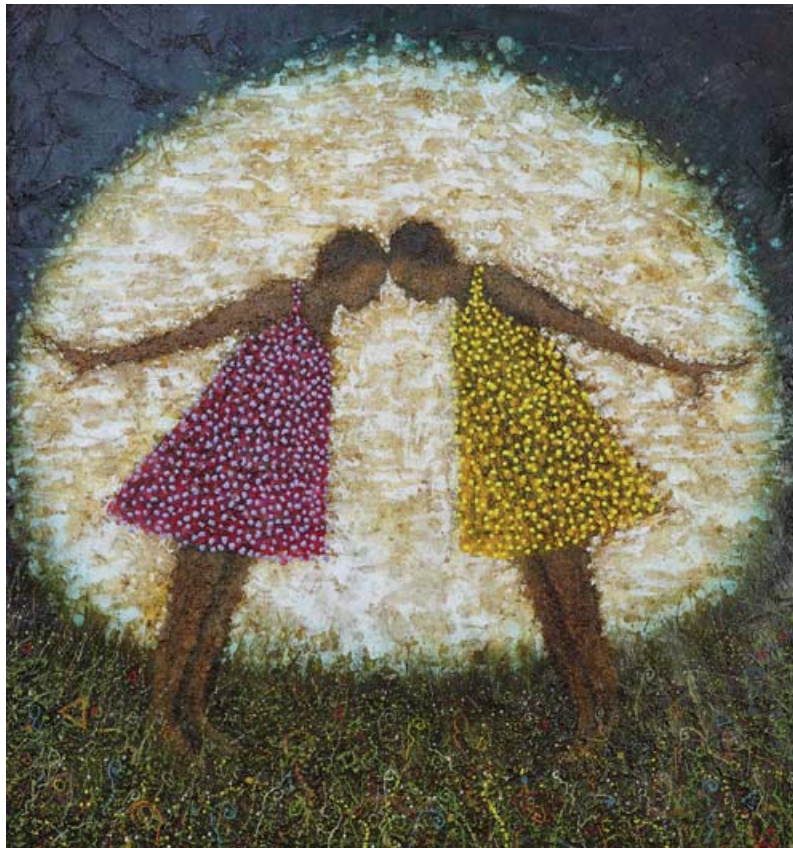
Gardener's Cottage, 53 x 64cm, Oil on Fresco Panel



Path, 90 x 90cm, Oil on Panel



Move, 60 x 60cm, Oil on Panel



Empaths, 74 x 70cm, Oil on Panel



Figure, 35 x 25cm, Oil on Panel



Two Ships, 123 x 123cm, Oil on Panel



Story Teller's House, 95 x 122cm, Oil on Panel



Rowboat, 63 x 69cm, Oil on Fresco Panel



Swing, 68 x 63cm, Oil on Fresco Panel



Bright Pool, 60 x 60cm, Oil on Panel



Bonfire, 30 x 40cm, Oil on Panel



The Climber, 40 x 40cm, Oil on Panel



Repairing Nets, 22 x 32cm, Oil on Panel



Midnight Ramble, 39 x 32cm, Oil on Panel



Blue Vase, 30 x 30cm, Oil on Panel

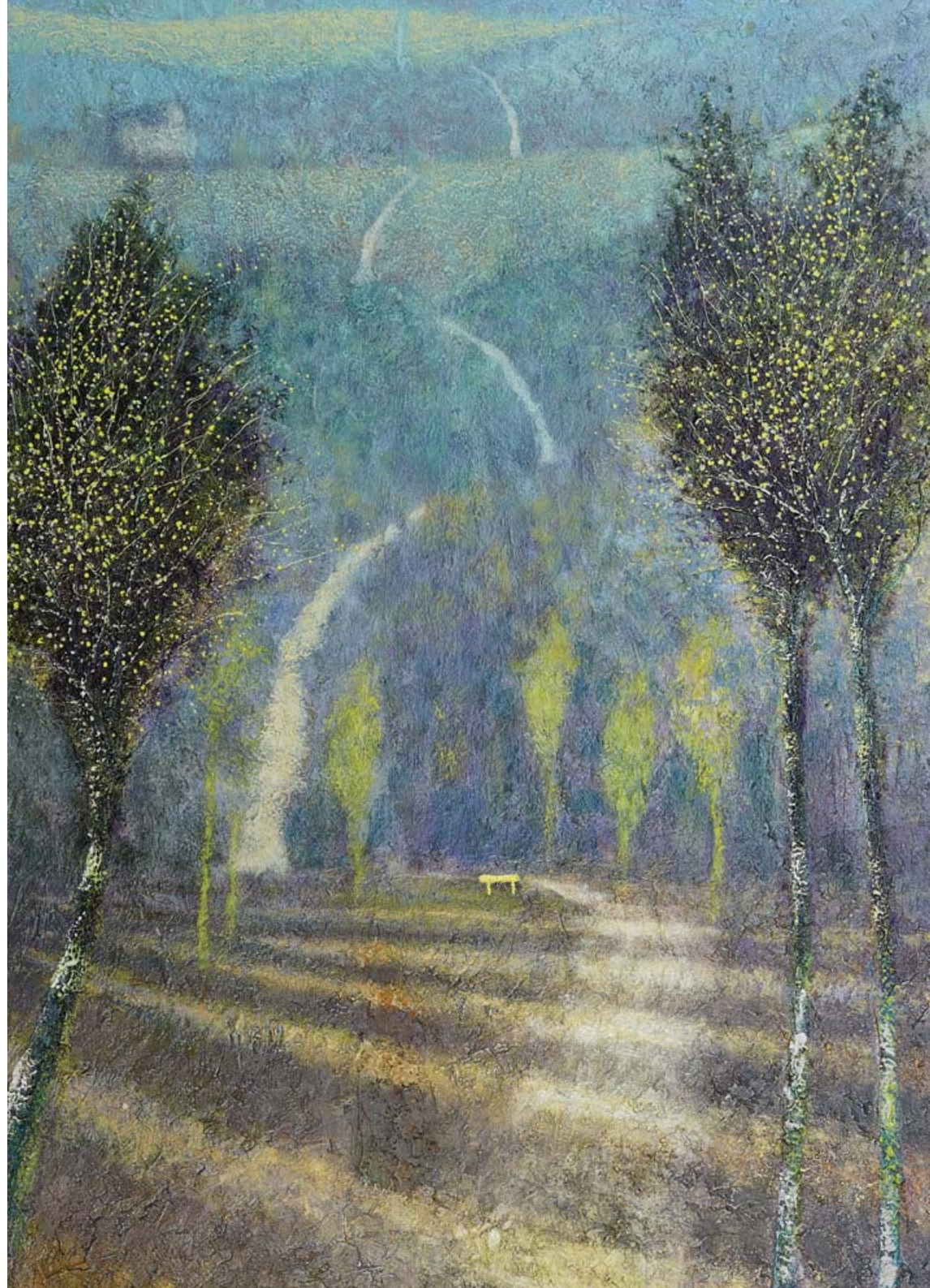


Highland House, 40 x 44cm, Oil on Panel



Lane, 60 x 44cm, Oil on Panel

Yellow Table, 90 x 64cm, Oil on Panel





House in the Woods, 90 x 91cm, Oil on Panel



Hill Farm, 36 x 47cm, Oil on Panel



Garden, 44 x 64cm, Oil on Panel



Coast Path, 64 x 90cm, Oil on Panel



The Park, 64 x 90cm, Oil on Panel



CATTO GALLERY

100 Heath Street • Hampstead • London NW3 1DP

Tel: +44 (0)20 7435 6660

www.cattogallery.co.uk • art@cattogallery.co.uk

Opening times: 10am - 5.30pm Mon – Sat

12 - 5pm Sunday • and by appointment

Exhibition dates: 11th – 29th April 2024