

Bruce Yardley

Bruce Yardley

Solo Exhibition
September 2016

CATTO GALLERY

100 Heath Street • Hampstead • London NW3 1DP
Tel: +44 (0)20 7435 6660 • art@cattogallery.co.uk



Claude Monet said: "Light is the most important person in the picture." A clever turn of phrase, but one that neatly sums up the enduring appeal of impressionism among both art lovers and painters too. We all love a beautiful landscape, but what gives a landscape vibrancy is light.

Across the history of art, the impressionists understood this simple truth best. They were the first to break from the classical tradition to develop a more intuitive form of painting. In their hands, the precise perspectives of the renaissance masters gave way to something more fluid, something that comes closer to how we actually see the world.

Their spirit endures nearly 150 years on. And in the UK, there is no finer practitioner than Bruce Yardley. This devotee of Degas, Sickert and - of course - Monet is one of the Catto's most popular and enduring artists. In this new exhibition, he shows why. There is so much to love in the show. But let's take the two glorious 'portraits' of Bath Abbey. These wide angle landscapes - painted from Bruce's own studio, located nearby - are like a masterclass in how to paint light. The first shows the abbey bathed in morning sun. The second as dusk approaches. The former is all watery blues and creamy stone; the latter inky purples and autumnal gold. Light is certainly the most important person here.

Bruce's remarkable skill reflects his lifelong dedication to the craft of oil painting. He was born in 1962, the son of a painter. His father, John Yardley, was a noted watercolourist who encouraged his son to

join him on his painting trips into the Surrey countryside.

Inevitably, Bruce began painting too. But it took a while for him to turn his pastime into a career. He studied history at Bristol and Oxford and then worked in the wine trade before committing to painting in 1996. Success came fast: he was very quickly taken up by leading galleries and elected an associate member of the Royal Institute of Oil Painters'.

Throughout his career, Bruce has focused his eye on some of the world's most beautiful cities: London, Bath, Venice, Rome, Paris. Who can blame him? All those rivers, bridges, churches and piazzas offer endless opportunities for a painter of light. In the new show he seizes these opportunities. It's invidious to pick out examples, but From Rialto Bridge - Dusk stands out with its shimmering pink palette. And let's not overlook Bruce's elegant still lifes. Works like Chrysanthemums on the Coffee Table bring Bruce's love of light indoors and create small jewels of delicate symmetry.

Monet also said: "Other artists paint a bridge, a house, a boat, and that's the end. They are finished. I want to paint the air which surrounds the bridge, the house, the boat - the beauty of the air in which these objects are located, and that is nothing short of impossible."

If he's right and it is impossible, there's so much to be gained from striving after what's deemed to be unachievable. And that's Bruce Yardley. Impossibly good.



Bath Abbey, morning
- view from the studio,
30 x 91cm, oil on canvas



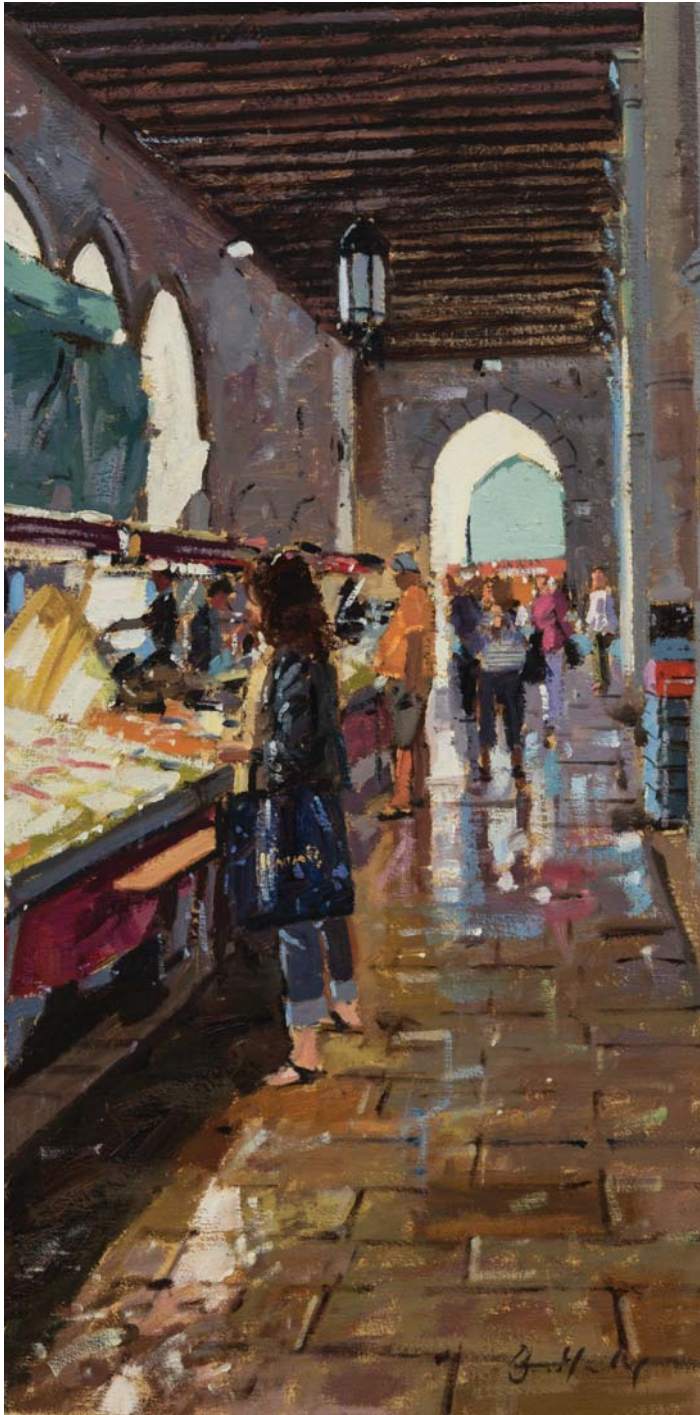
Bath Abbey at night
- view from the studio,
30 x 91cm, oil on canvas







Venice fishmarket, 51 x 61cm, oil on canvas



Harrod's bag, Venice fishmarket,
61 x 30cm, oil on canvas



Sundown, Cannaregio,
61 x 30cm, oil on canvas

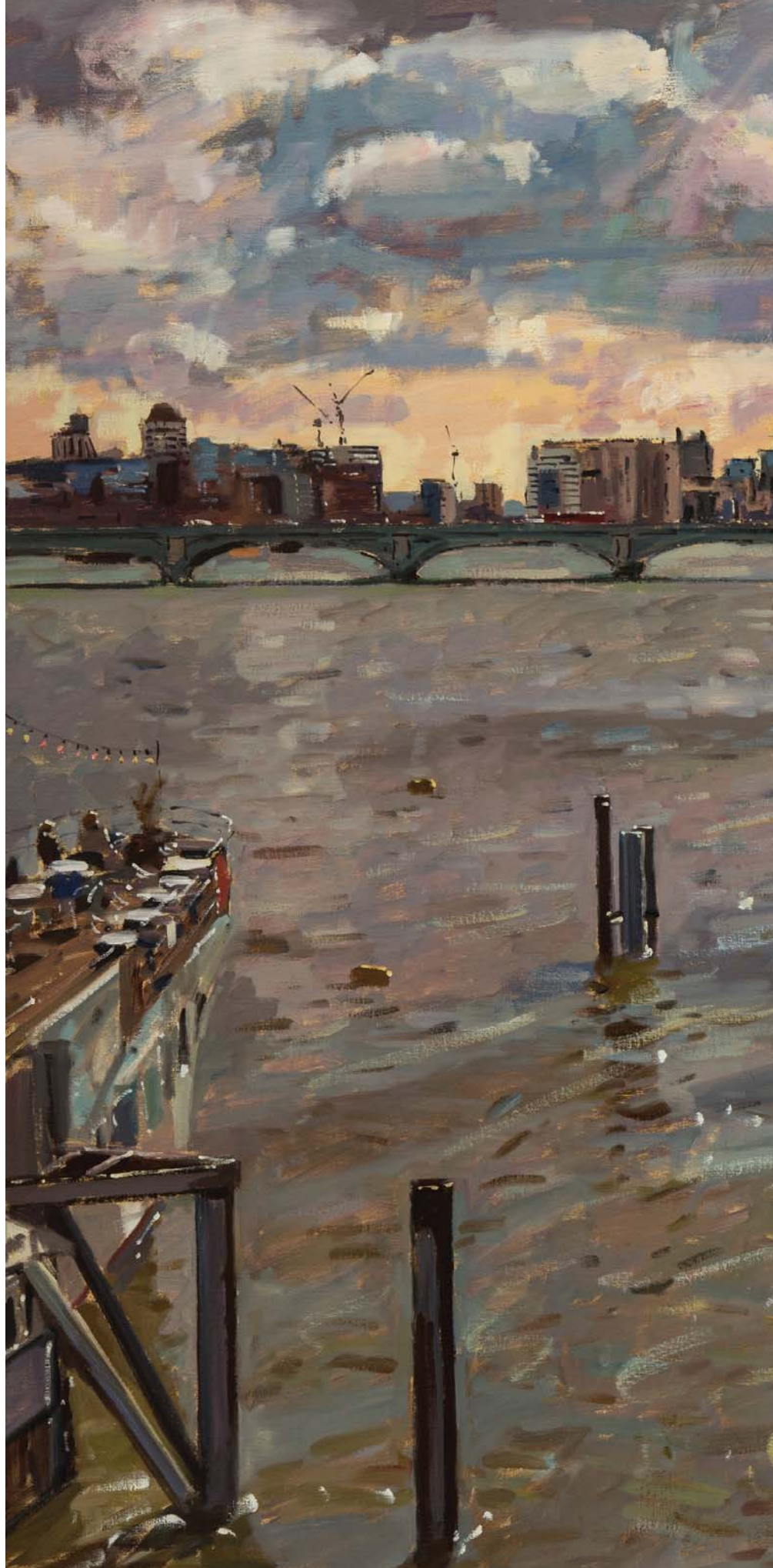


Georgian drawing room, 51 x 61cm, oil on canvas

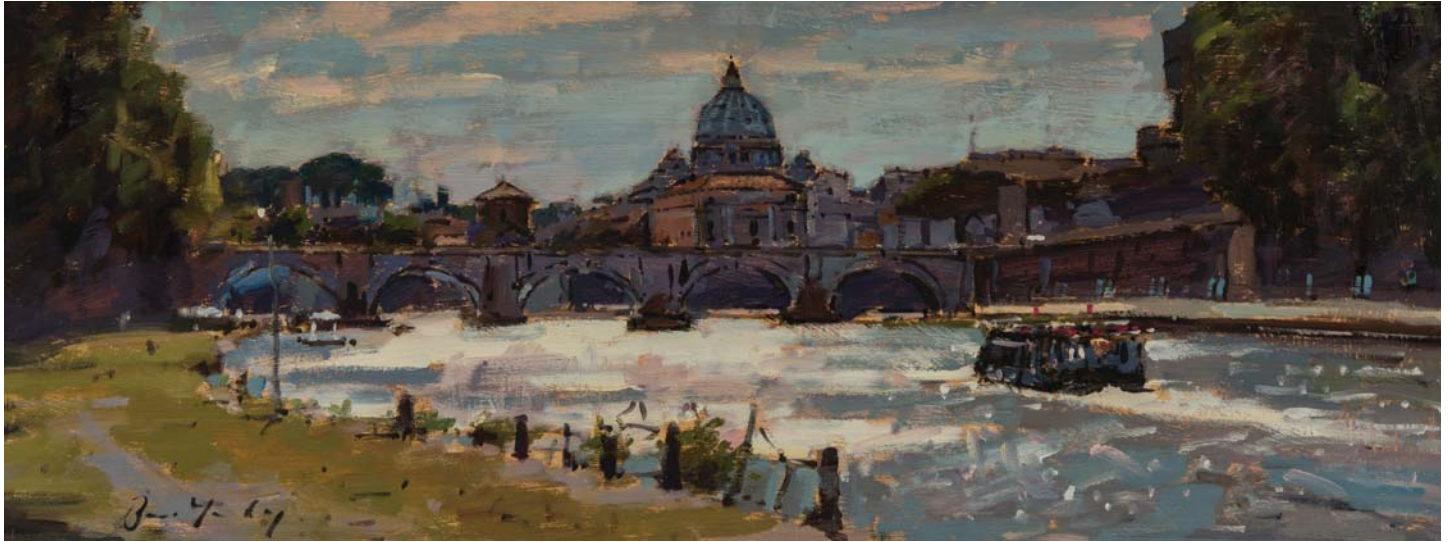


Baroque saloon, 51 x 61cm, oil on canvas

Westminster Palace
from Hungerford Bridge,
102 x 122cm, oil on canvas







Banks of the Tiber, 20 x 51cm, oil on board



St Peter's from Ponte Umberto, 20 x 51cm, oil on board



Early morning, Piazza Erbe, 51 x 61cm, oil on canvas



Dining room flowers, 30 x 41cm, oil on canvas



Coffee-Table, books and flowers, 41 x 51cm, oil on canvas



Flowers and regency sofa, 71 x 51cm, oil on canvas



Grand canal, silver and bronze, 17 x 35cm, oil on board



Grand Canal gondolas, 17 x 22cm, oil on board



Baroque fountains, Piazza Navona, 20 x 25cm, oil on board



Pescheria from Ca'pesaro, 17 x 30cm, oil on board

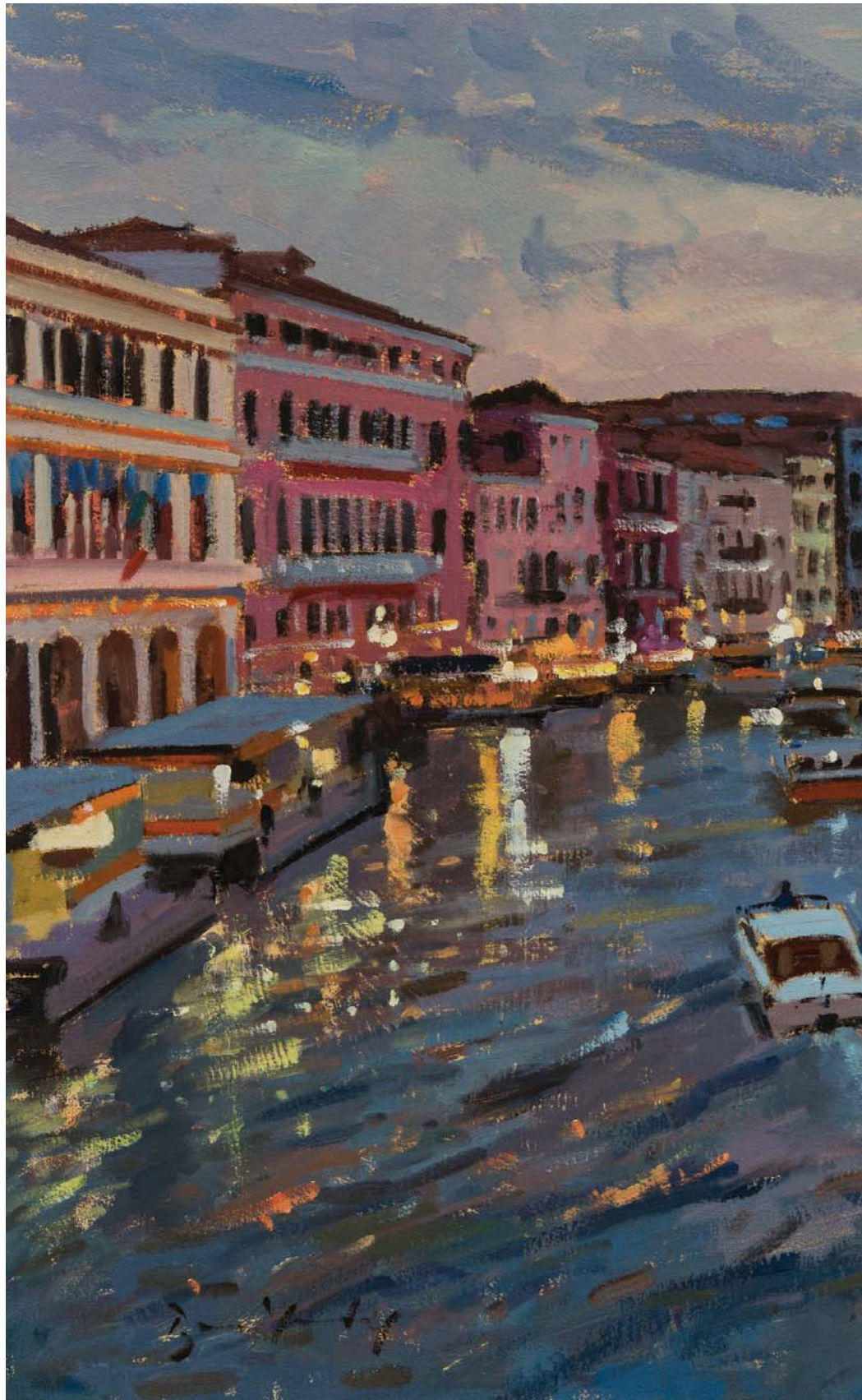


Rialto markets, Grand Canal, 17 x 30cm, oil on board

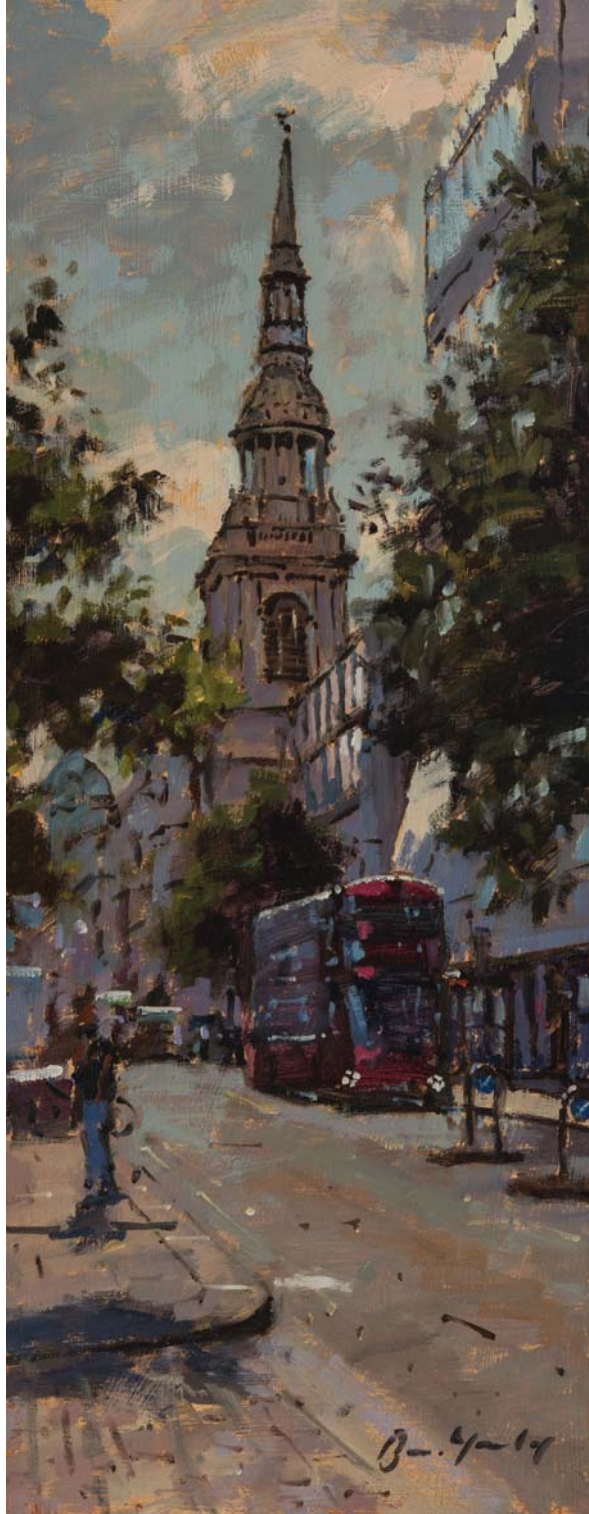


Pantheon, Rome, 17 x 25cm, oil on board

From Rialto bridge - dusk,
51 x 76cm, oil on canvas



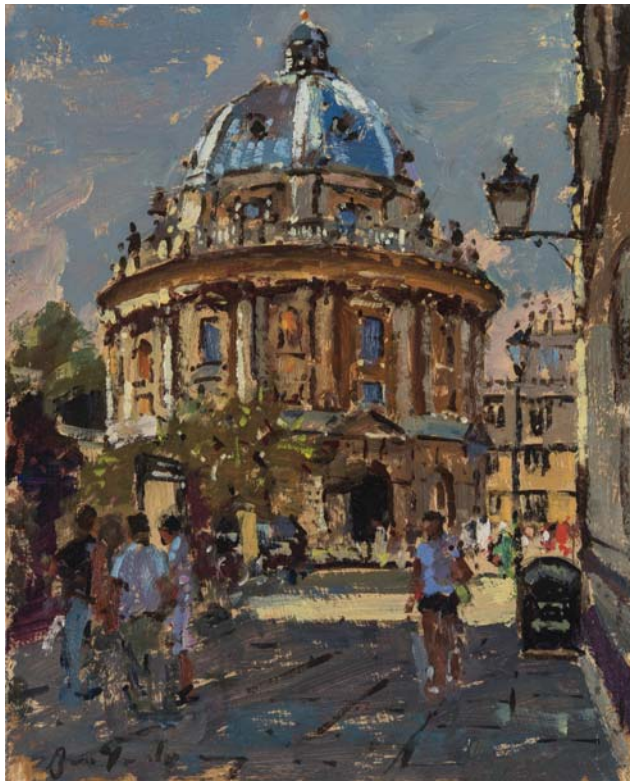




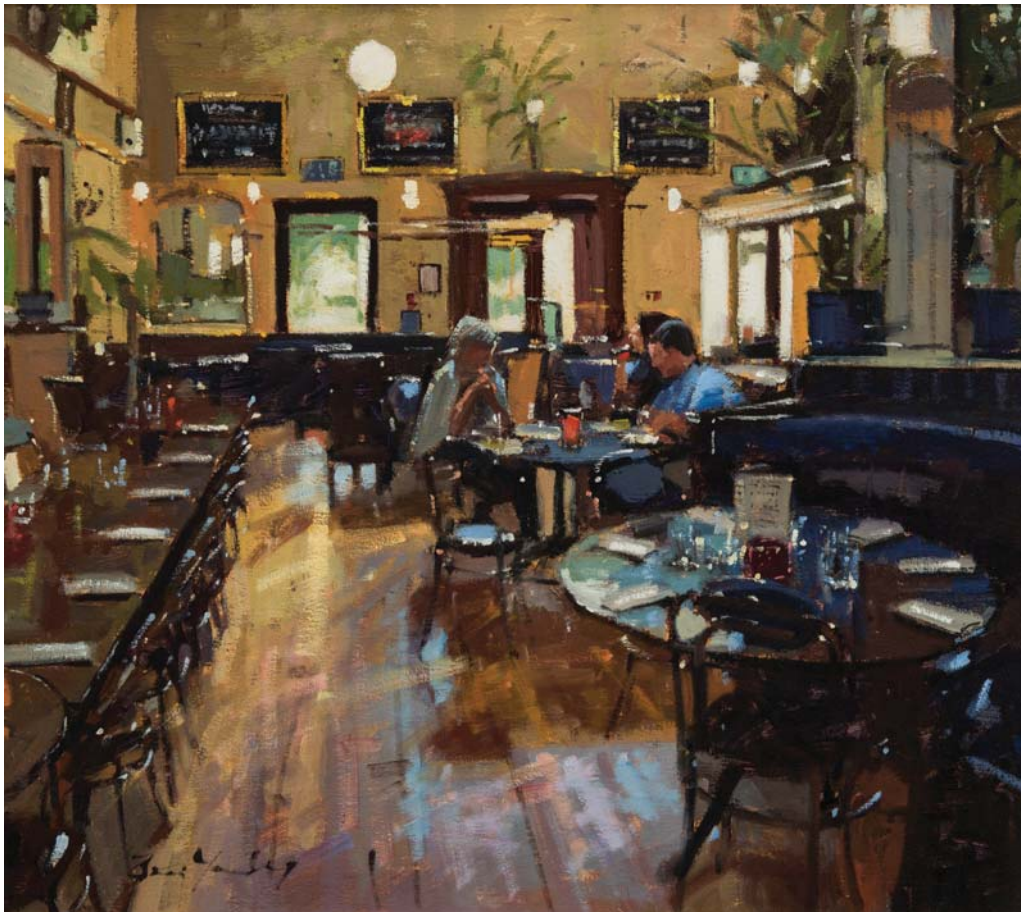
St Mary Le Bow, 43 x 17cm, oil on board



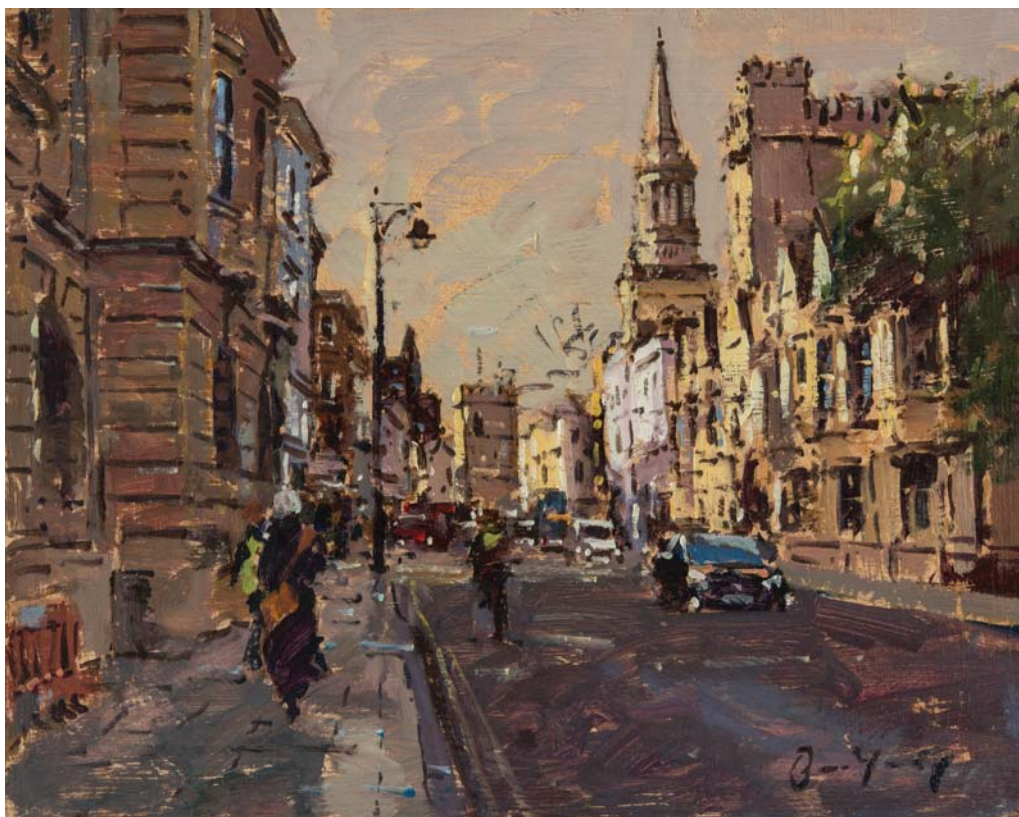
Summer Morning, St Paul's, 122 x 102cm, oil on canvas



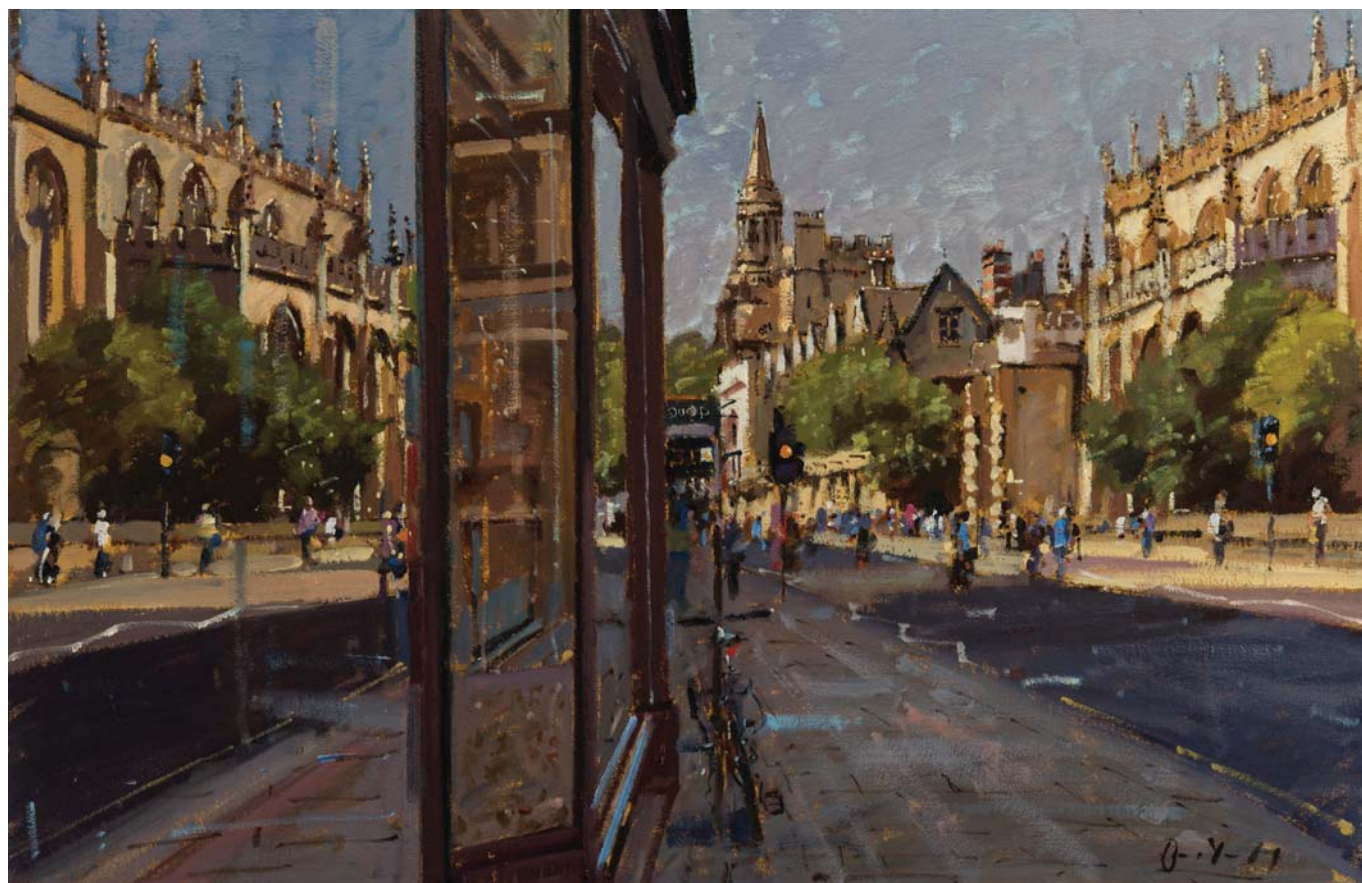
Radcliffe camera from Catte Street, 25 x 20cm, oil on board



Browns, Cambridge, 51 x 56cm, oil on canvas



Winter sun, Oxford, 20 x 25cm, oil on board



Oxford reflections, 51 x 76cm, oil on canvas



Chrysanthemums on the coffee table, 76 x 51cm, oil on canvas



Still life with flowers and mantel clock, 61 x 76cm, oil on canvas



Mantelpiece Tulips, 41 x 61cm, oil on canvas



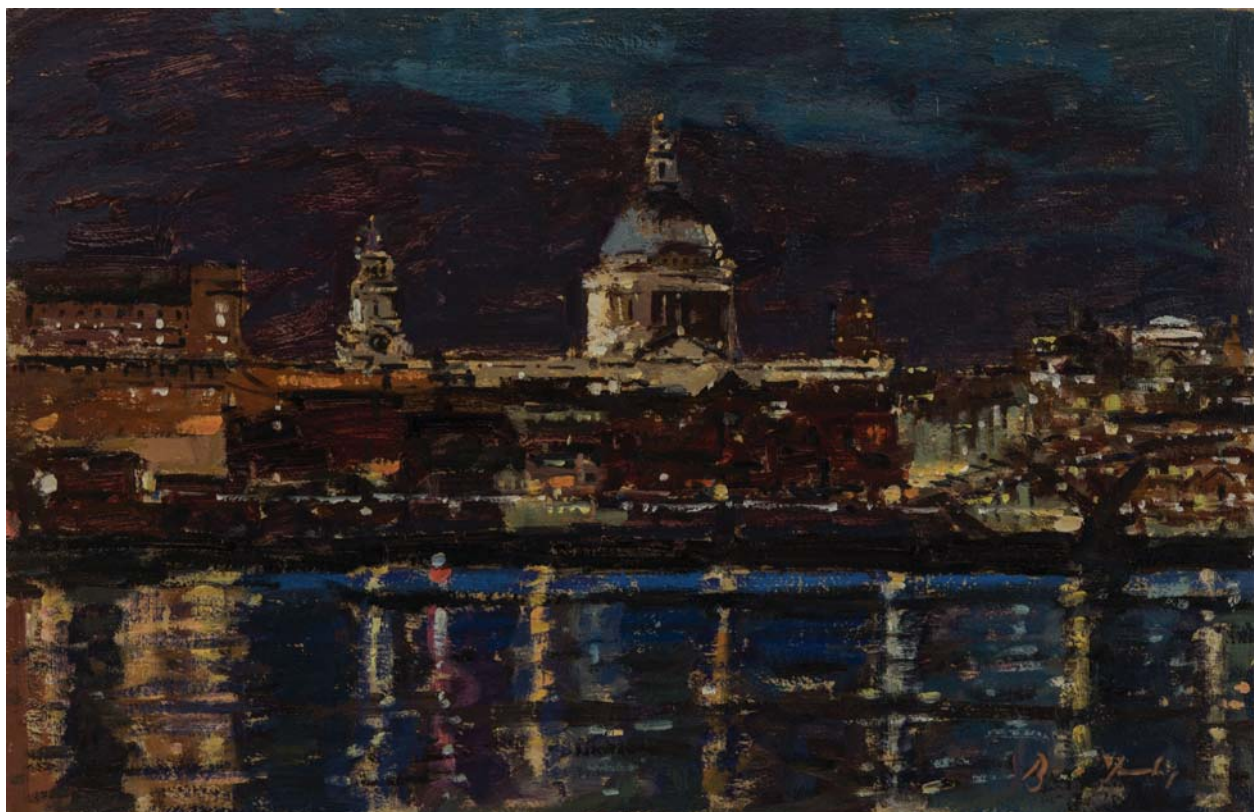
Piazzetta at night, Looking South, 41 x 51cm, oil on canvas



Piazzetta at night, looking north, 41 x 51cm, oil on canvas



Nightfall, St Paul's, 30 x 30cm, oil on board



St Paul's and the river, night, 30 x 45cm, oil on canvas

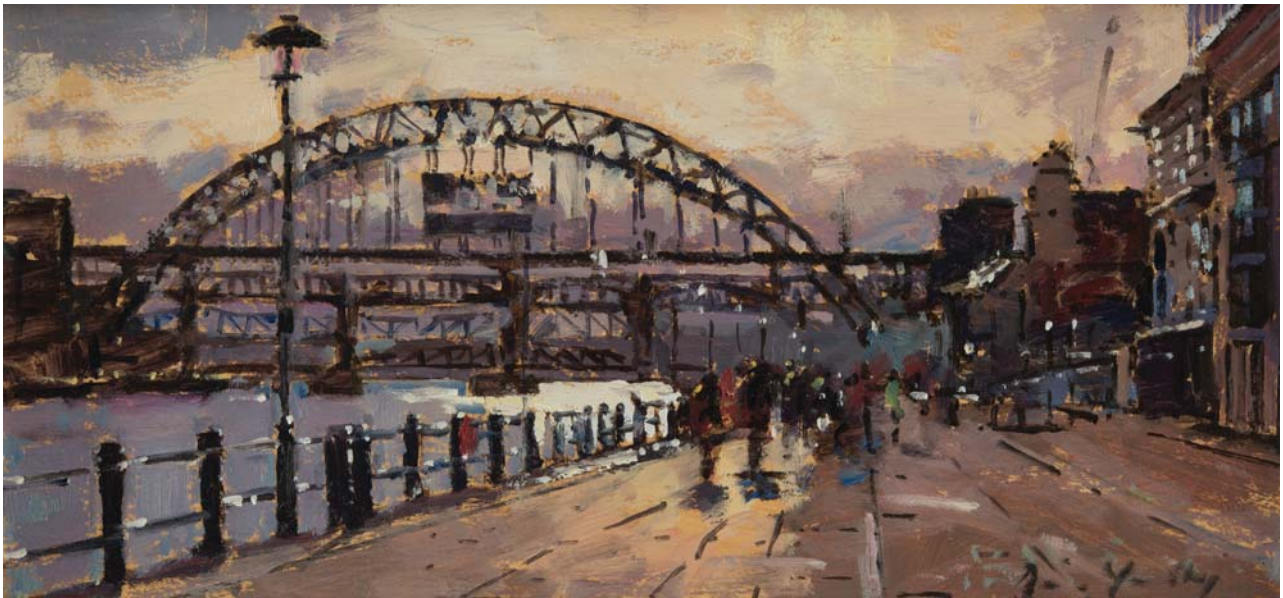
HMS Belfast, winter sun
51 x 102cm, oil on canvas



July morning, Tower Bridge, 20 x 25cm, oil on board



'Tattershall Castle' from Hungerford Bridge, 61 x 76cm, oil on canvas



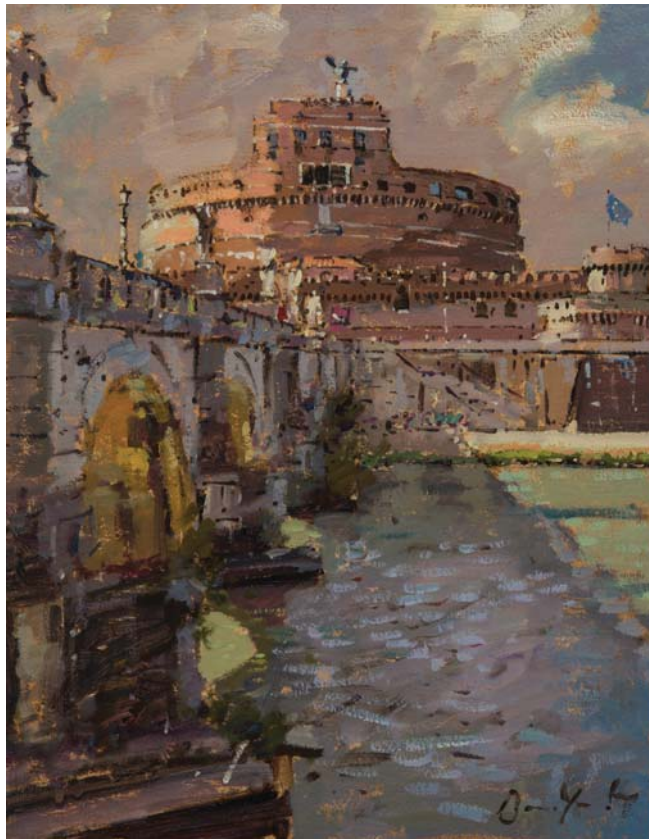
New Tyne Bridge, Newcastle, 15 x 30cm, oil on board



Bridges over the Tyne, 41 x 51cm, oil on canvas



High level bridge, Newcastle, 51 x 61cm, oil on canvas



Castel Sant' Angelo and the Tiber, 41 x 30cm, oil on canvas



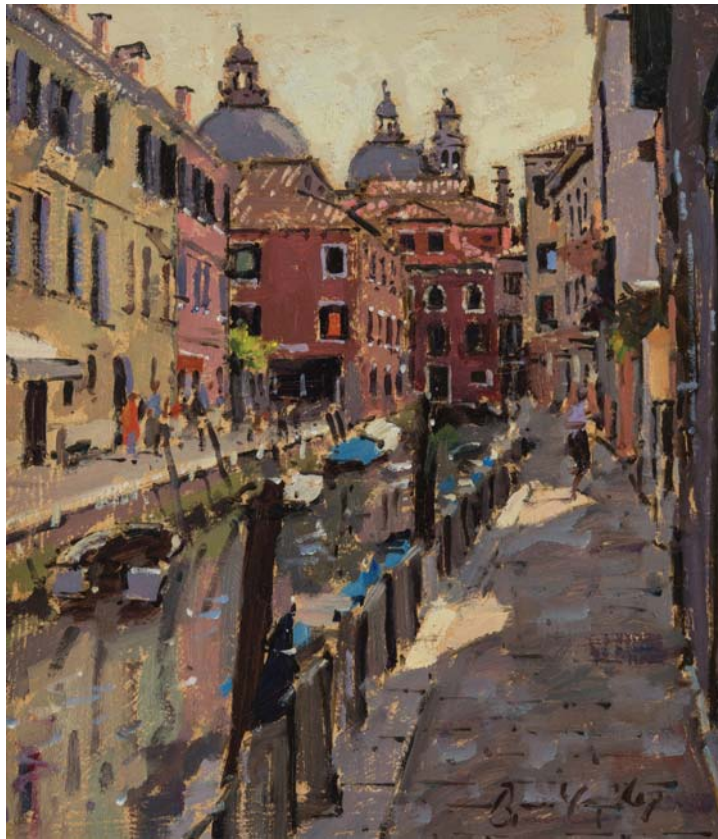
Castel Sant' Angelo, 30 x 41cm, oil on board



Art stands, Piazza Navona, 25 x 50cm, oil on board



Piazza del Popolo, Rome, 30 x 45cm, oil on canvas



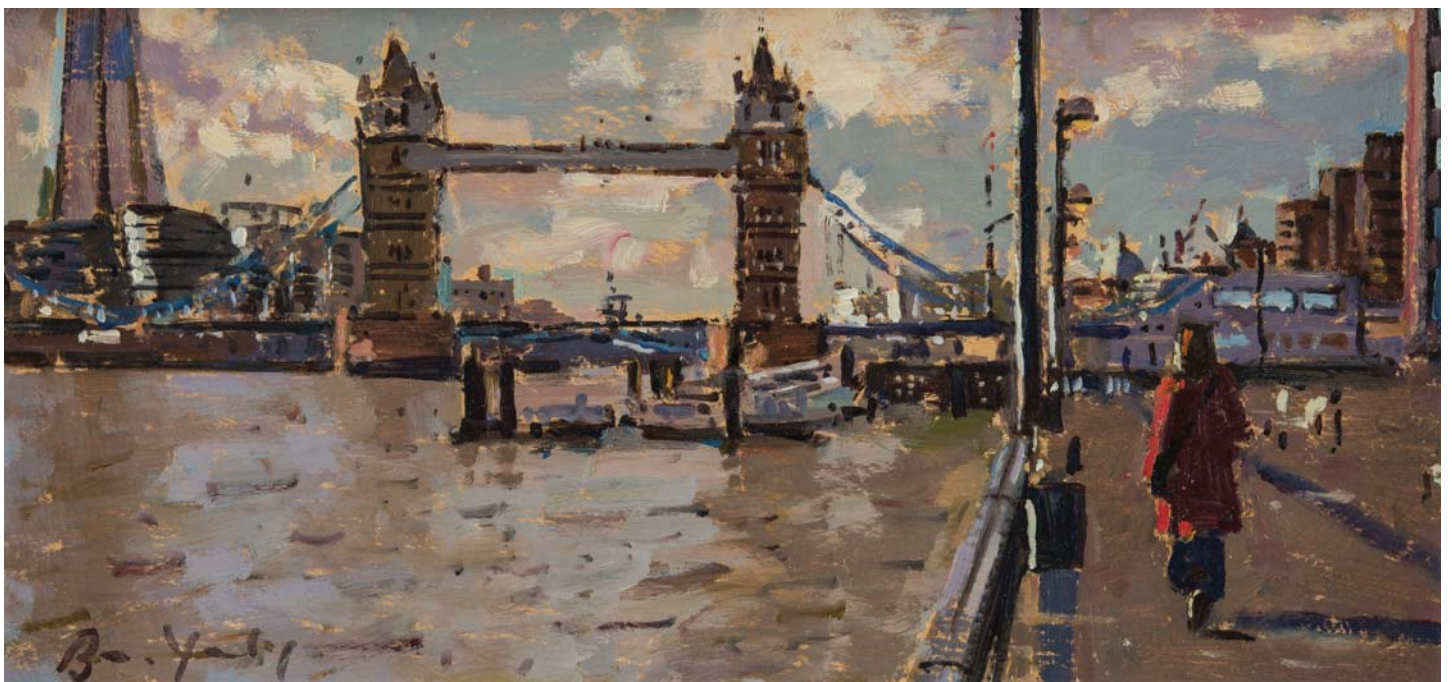
Behind the Salute, 30 x 25cm, oil on board



Summer evening, Cannaregio, 41 x 51cm, oil on canvas



Ludgate Circus, 25 x 20cm, oil on board



Tower Bridge from the east, 15 x 30cm, oil on board



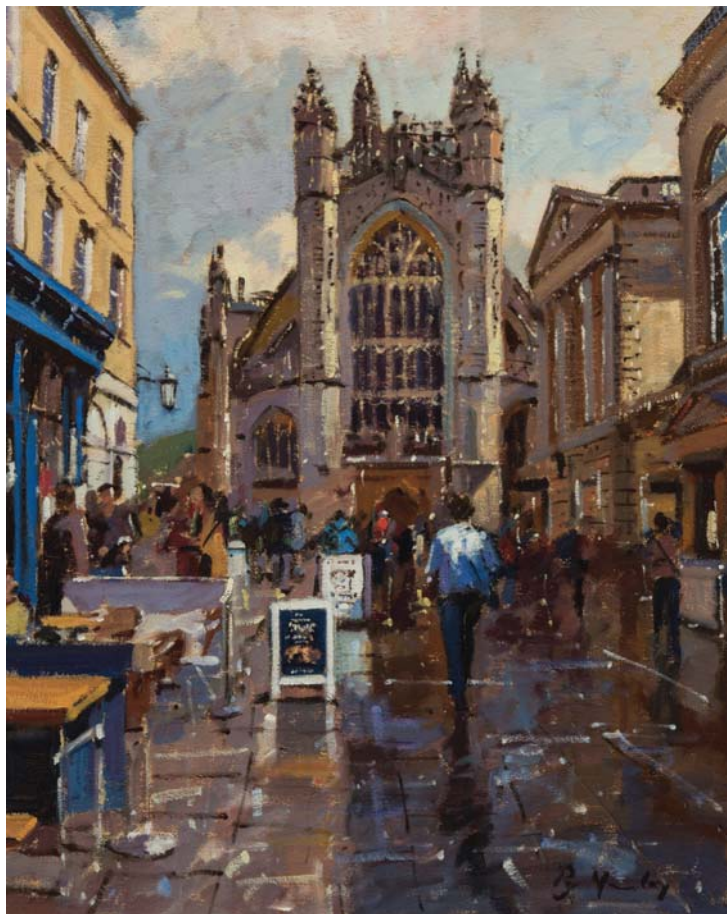
White umbrella, Oxford, 25 x 30cm, oil on board



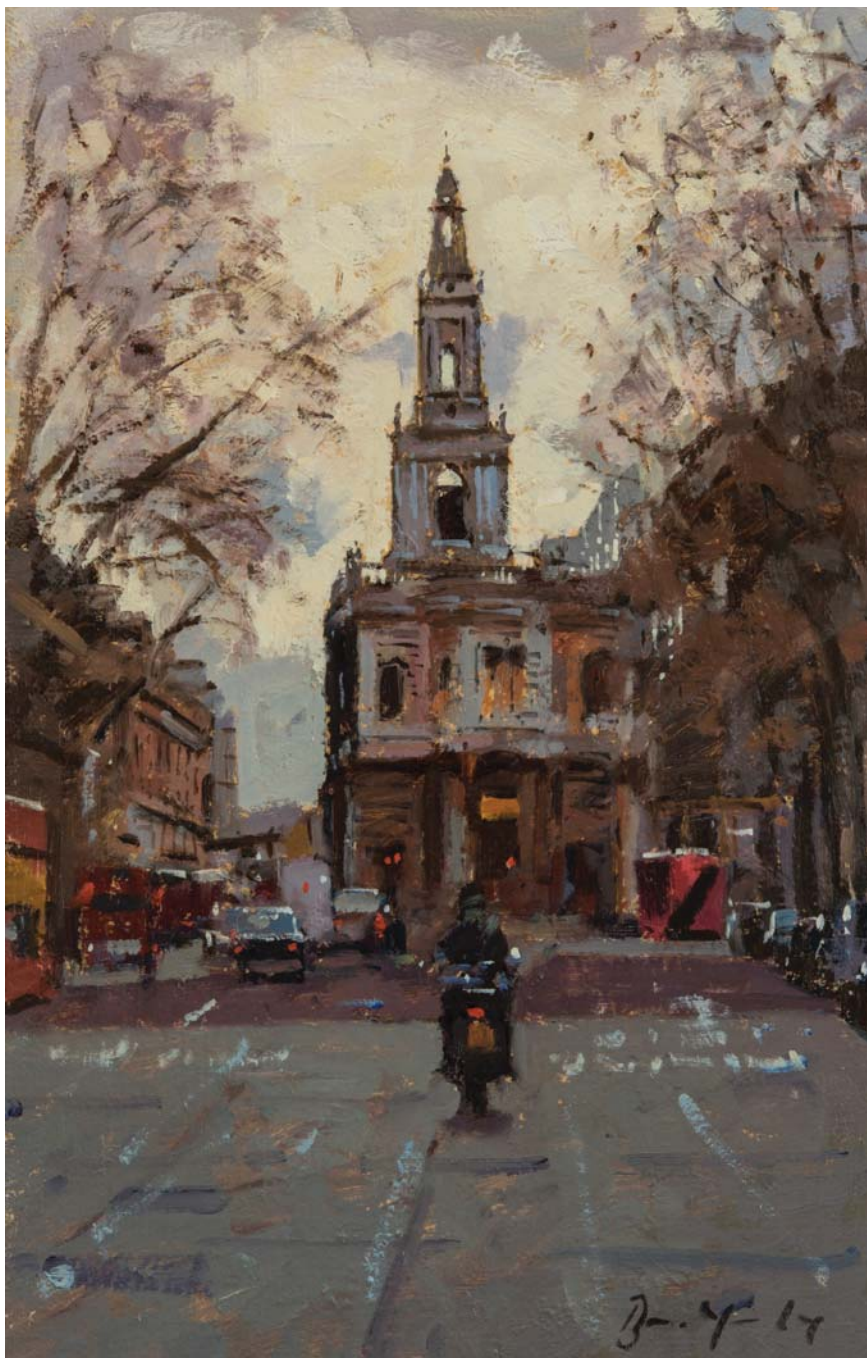
The Saloon, Ston Easton Park, 41 x 30cm, oil on canvas



December sun, Milsom Street, 25 x 30 cm, oil on board



Showers, Abbey Yard, 51 x 41 cm, oil on canvas



CATTO GALLERY

100 Heath Street • Hampstead • London NW3 1DP

Tel: +44 (0)20 7435 6660 • www.cattogallery.co.uk • art@cattogallery.co.uk

Opening times: 10am - 6pm Mon - Sat • 12.30pm - 6pm Sunday • and by appointment

Exhibition dates: 8th – 26th September 2016