

A painting of St Mark's Basilica in Venice at dusk. The church's ornate facade, featuring multiple domes and arched windows, is illuminated from within, casting a warm glow. The central entrance is brightly lit, and several windows on the upper levels are also glowing. The church is situated on the right side of the Grand Canal. In the foreground, the dark water of the canal reflects the lights from the church and the surrounding buildings. A small bridge with a single arch spans the canal to the left of the church. On the far left, the dark, multi-story buildings of the Venetian architecture line the canal. In the lower right foreground, the stern of a gondola is visible. The sky is a deep, dark blue, suggesting twilight. The overall style is that of a classical oil painting, with visible brushstrokes and a rich, atmospheric quality.

NICHOLAS VERRALL



Windsor Castle, Evening 38 x 39cm, Oil on Panel

Nicholas Verrall is a distinguished British landscape artist whose work has often been compared to the French Impressionists. For the whole of his career he has dedicated himself to developing a contemporary vision of the impressionist legacy. By any measure, he has been extremely successful, collecting dozens of awards and gathering legions of fans.

Nick studied at the Northampton School of Art before a short career working in picture conservation. From 1971 he became a full time artist beginning with a one man show at the Upper Grosvenor Gallery. Across five decades he has won numerous prizes including The City of London Annual Exhibition Prize, the Abbot and Holder Prize and in 2015 the de Laszlo Medal. He was elected a member of The Royal Society of British Artists (RBA) in 2010 and The Royal Society of Oil Painters (ROI) in 2011. His work has also been exhibited at the Royal Academy and is held in numerous private and public collections.

In the current exhibition, the full range of Nick's talent is on display. Let's go on a mini tour. We can start in Tuscany. 'Toscana Summer' is a sumptuous evocation of the Italian region replete with dancing sunflowers and hazy forested hills. From there we can zip over to Eastern France with 'Chateau Chalon'. It's a similar composition, but this time striking red and purple poppies threaten to overwhelm the pretty village in the distance. 'Winter sun, Venice' is not just a beautiful work it's also a masterclass in how to paint water. The way Nick depicts the sun refracting across the ripples of the Mediterranean is breath-taking. 'Windsor Castle Evening' is another technical showstopper, but this time it's the moody cobalt sky rather than the sea that is the focus of Nick's attention.

These are just four of the many fantastic landscapes in the show. But there are other works that reveal a different side to the artist. A World Beneath is a fascinating example, depicting a swirling vortex of tropical fish. Yes, it's a representative work, but it shares a semi-abstract quality with the best impressionist paintings. The same quality is apparent in Blossom in The Woods and Willow Reflections. As the artist himself says: "It is interesting to me to see how the play of light and shadows can fragment an image and make something that is very easy to understand seem quite abstract."

Come to the Catto to peruse these beautiful works up close and see how the echoes of 19th century impressionism are reverberating into the 21st.

Front Cover: Scuola Grande di San Marco, 80 x 62cm, Oil on Panel

Nicholas Verrall

18th September – 9th October 2025

CATTO GALLERY

100 Heath Street • Hampstead • London NW3 1DP
Tel: +44 (0)20 7435 6660 • art@cattogallery.co.uk



Sunflowers and Shadows, 60 x 50cm, Oil on Panel



Toscana, Summer, 77 x 101cm, Oil on Canvas



Summer in the Meadow, 49 x 69cm, Oil on Panel



The Iris Garden 75 x 82cm, Oil on Canvas



L'Isle-sur-la-Sorgue, 60 x 80cm, Oil on Panel



Willow Reflections, 121 x 93cm, Oil on Canvas



Autumn Day, Provence, 71 x 86cm, Oil on Canvas



Blossom in the Woods, 106 x 101cm, Oil on Canvas



Balcony Garden, Provence, 85 x 70cm, Oil on Panel



Antibes Old Town, 60 x 80cm, Oil on Panel



Les Beaux de-Provence, 47 x 39cm, Oil on Panel



Still Life with Creamware, 40 x 39cm, Oil on Panel



Nasturtiums under the Vines, 121 x 96cm, Oil on Canvas



A World Beneath, 118 x 104cm, Oil on Canvas



Bormes-les-Mimosas, 80 x 107cm, Oil on Canvas



The Rose Garden, Evening, 38 x 50cm, Oil on Panel



Little Venice of the Gard, 31 x 46cm, Oil on Panel



Waiting Gondola, 35 x 45cm, Oil on Panel



Winter Sun, Venice 79 x 101cm, Oil on Canvas



Wild Irises, Albury Park, 60 x 79cm, Oil on Panel



St Peter and St Paul, Albury, 28 x 39cm, Oil on Panel



The Tillingbourne, Albury Park, 28 x 38cm, Oil on Panel



The Flower Seller, Aix-en-Provence, 35 x 50cm, Oil on Panel



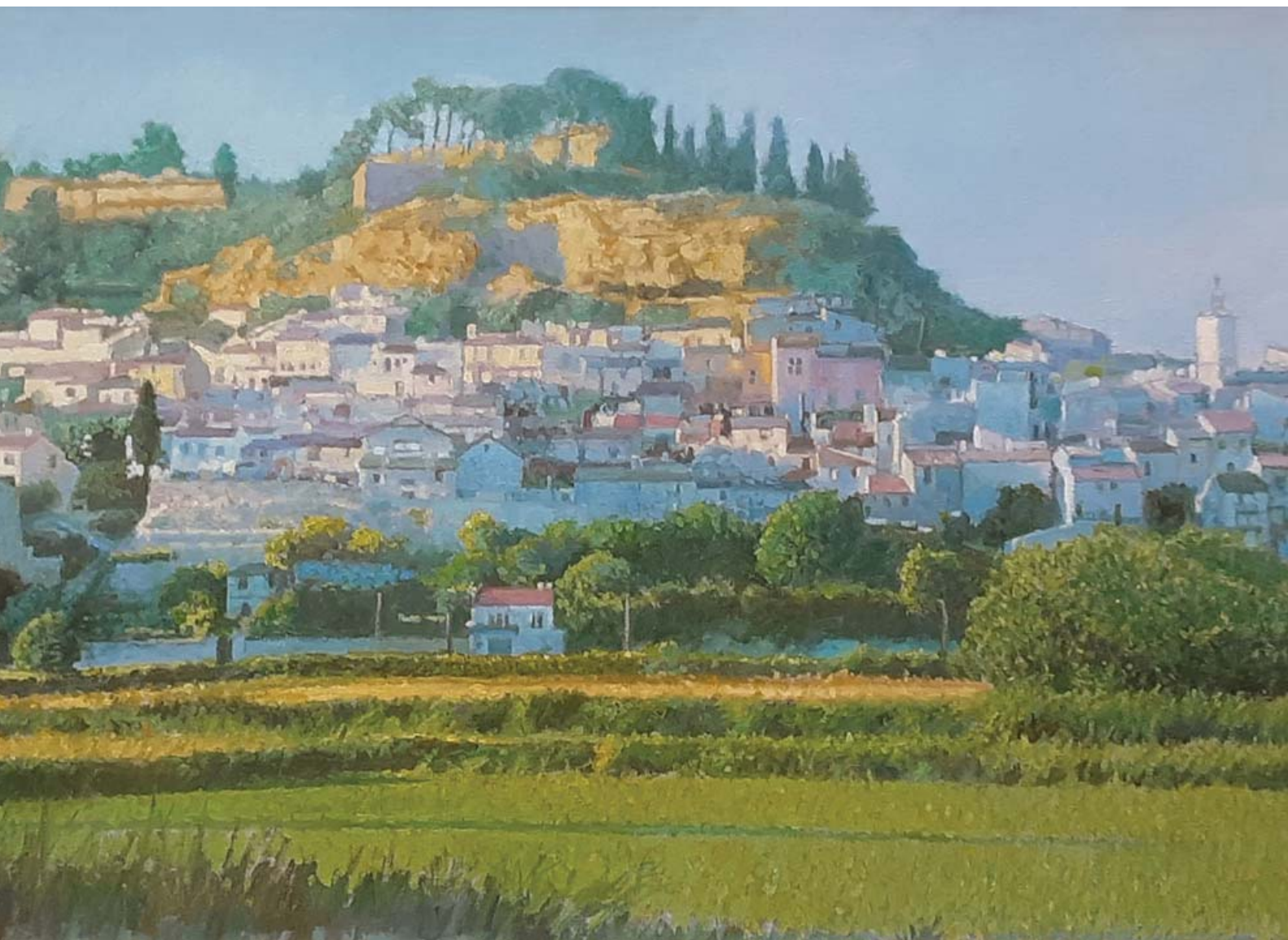
Port Grimaud, Provence, 70 x 95cm, Oil on Panel



Le Rempart, Dinan, 92 x 98cm, Oil on Canvas



Path through the Vineyard, 44 x 36cm, Oil on Panel



Spring in the Luberon, 71 x 96.5cm, Oil on Canvas



Autumn by the Lake, 50 x 62cm, Oil on Panel



Reflections, Cucuron, 55 x 48cm, Oil on Panel



Mimosa, Alpes-Cote-d'Azur 76 x 94cm, Oil on Canvas



CATTO GALLERY

100 Heath Street • Hampstead • London NW3 1DP

Tel: +44 (0)20 7435 6660 • www.cattogallery.co.uk • art@cattogallery.co.uk

Opening times: 10am - 5.30pm Mon – Sat • 12 - 5pm Sunday • and by appointment

**You are welcome to attend the Private View
Thursday 18th September 5.30-8.00pm
Please RSVP if you would like to attend to art@cattogallery.co.uk.**

Exhibition Dates: 18th September – 9th October 2025