

MIXED SCULPTURE EXHIBITION



CATTO GALLERY 2017

Mixed Sculpture Exhibition

3rd - 23rd December 2017

CATTO GALLERY

100 Heath Street • Hampstead • London NW3 1DP
Tel: +44 (0)20 7435 6660 • art@cattogallery.co.uk



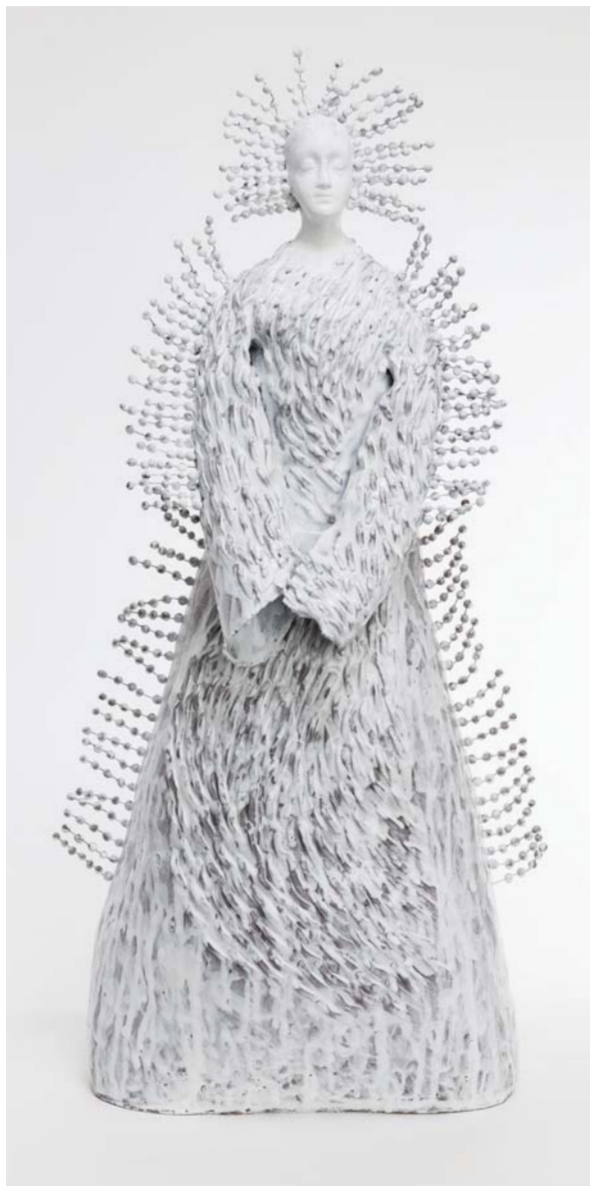
FABIENNE AUZOLLE

Ceramist Fabienne Auzolle is one of France's most celebrated and original artists. It's easy to see why. Her work is delicate, mystical, beautiful. And it has brought her success in exhibitions from US to Korea, and Norway to Singapore.

Fabienne was born in Clermont-Ferrand, France, 1967, and decided on her career from a very early age. She was captivated by what she saw on many family visits to France's castles and museums. She would go on to study History of Art at the Ecole du Louvre, and then complete a four year course in ceramics at the Ecole Supérieure Nationale des Arts Appliqués Duperré in Paris.

Fabienne has travelled the world to perfect her craft – from studying primitive firing techniques in Burkina Faso to the glazed earthenware method in Italy. The result is evident in her unique work. Fabienne crafts enigmatic female figures by hand in her studio, a former glassworks in Choisy Le Roi, using a mix of clay, enamel and bits of antique jewellery she buys at flea markets. These creations often feature garlands of flowers fashioned from metal, stone and pearl. They are little marvels of feminine mystery.

Autumn, Height 60cm, Ceramic



Oranté, Height 90cm, Ceramic



La Ménine, Height 55cm, Ceramic



Charmed Woman, Height 60cm, Ceramic



La Dame au Lapin I, Height 50cm, Ceramic



Tree of Life with Poppies, Height 60cm, Ceramic



Tree of Life with Cornflowers, Height 60cm, Ceramic



La Dame au Lapin II, Height 50cm, Ceramic



Queen Margot, Height 60cm, Ceramic



Tempus Fugit (Time Flies), Height 55cm, Ceramic



Detail from Tondo



Tondo, 130cm diameter



Red and White Tree of Life, Height 60cm, Ceramic



White Tree of Life, Height 50cm, Ceramic



Glass Jars and Ceramic Tops ranging in size from 20-50cm high



Tree of Life with White Leaves, Height 60cm, Ceramic



Flora, Height 68cm, Ceramic



Bird Lady, Height 50cm, Ceramic



Storm in a Teacup, Bronze on Granite, Height 60cm, Edition 15

STEPHEN GLASSBOROW

Stephen Glassborow is a classical sculptor with a twist. His work projects the anatomical rigour of the Renaissance tradition, but Stephen adds arresting compositions and jarring colour to the mix to ensure a modern flavour. He frequently dissects the work, creating segments that define the sculptural qualities of the piece and that also serve to abstract the image. He says: "When I first started exhibiting, they would tell me I was a classical sculptor. It irked me, and so I found myself trying to put a quirk or a twist into the figure. I looked for ways to make the figure have a contemporary relationship."

Stephen was born in Hammersmith and studied painting in Newcastle and sculpture at Brighton College of Art before moving to Australia in the early 1980s. While studying, Stephen developed a fascination for the more physical demands of sculpture. By the time he arrived down under, he was committed to it. His chosen medium was clay; his chosen subject the human form.

Stephen began making ceramic art deco lamps and selling them from his shop in Blackrock. Eventually, Stephen took a leap and became a full time artist working in bronze. He has had great success across Asia Pacific, the US and the UK, and has held over 70 one man shows. He is also in demand for public work. Today, his pieces can be seen in Bangkok, Kuala Lumpur, Singapore, Hong Kong, Macao, Shanghai and Seoul. He has two winged sculptures on display outside the Sheraton on the Park Hotel in Sydney.



Hi Horse, Bronze on Granite Base, Height 98cm, Edition 11



Saddle Up, Bronze on Granite, Height 50cm, Edition 11



Jupiter, Bronze on Granite, Height 65cm, Edition 15



Jupiter (rear view)



Man-Made, Bronze on Granite base, Height 73cm, Edition 20



Fractal, Bronze on Granite base, Height 72cm, Edition 11



Flora and Fauna, Bronze on Granite base, Height 93cm, Edition 11



Frequent Flyer, Bronze on Granite, Height 35cm, Edition 11

On the Nose, Bronze on Granite, Height 180cm, Edition 9

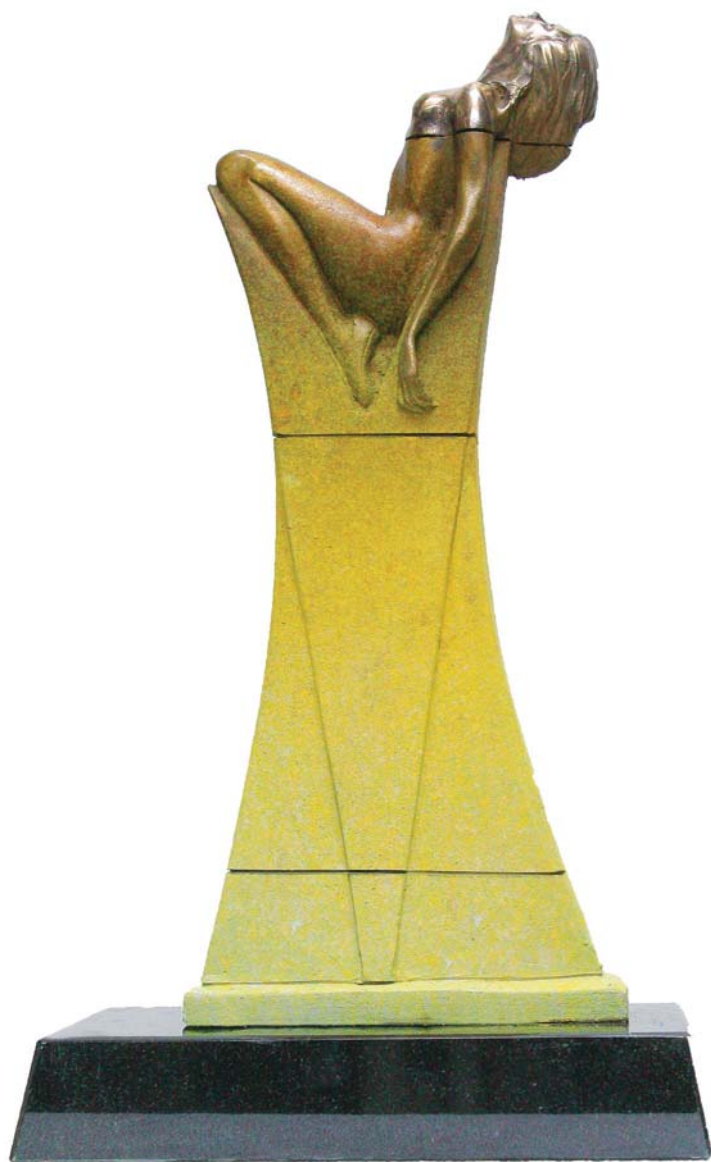




Mimosa, Bronze on Granite base, Height 35cm, Edition 11



Air Chair, Bronze on Granite base, Height 65cm, Edition 11



V, Bronze on Granite, Height 45cm, Edition 20



Dance Machine, Bronze on Granite base, Height 60cm, Edition 15



Acrobat, Edition of 7, Bronze, Height 72cm

JOHN HUGGINS

For over 50 years, sculptor John Huggins has pursued his artistic passion for interpreting natural forms – human figure, waves, birds in flight, horses – in bronze. However, the precedent for his work goes back thousands of years. Among John's many inspirations are the ancient Mediterranean sculptures of Malta and the Cyclades. That said, he also greatly admires Mapplethorpe, Modigliani and Matisse.

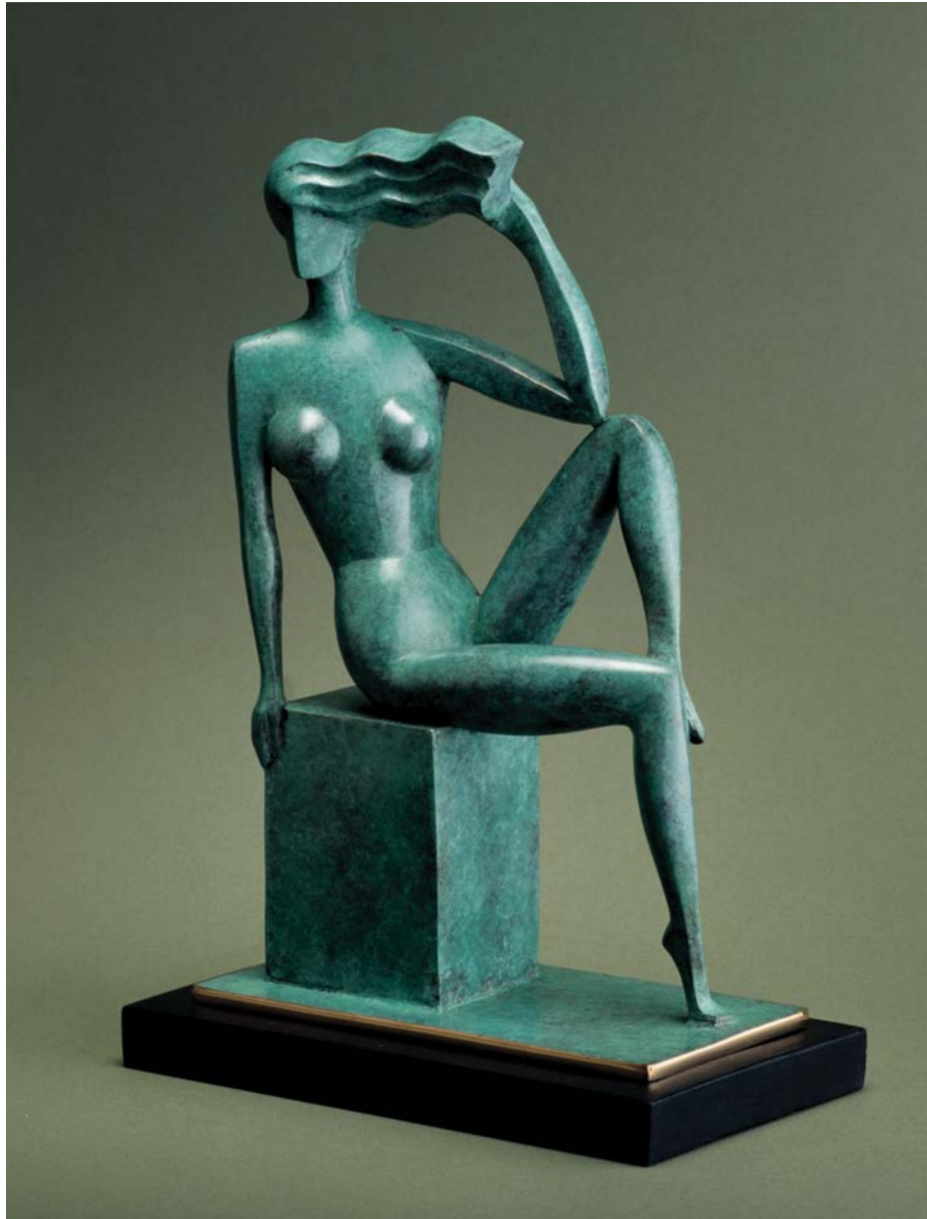
John was born in 1938 in Trowbridge, Wiltshire. He studied at the West of England College of Art, Bristol, and set up his first studio in 1962. As his career developed, he lectured at the universities and academies of Bristol and Bath. In 1969, he held the first of six bi-annual one man shows at the Alwin Gallery, London. He's been exhibiting ever since.

John's talent and commitment has made him a major figure in British sculpture. He was elected to the Royal West of England Academy (RWA) in 1967. He later became its senior vice president, and today serves as honorary vice president. He is also a fellow of the Royal Society of British Sculptors.

There are two books on John's work - a comprehensive and lavishly illustrated biography (2006) and a hardback review of recent works (2013). Copies are available from us during the exhibition.



High Kick Major, Edition of 7, Bronze, Height 120cm



Harmony, Edition of 7, Bronze, Height 29cm



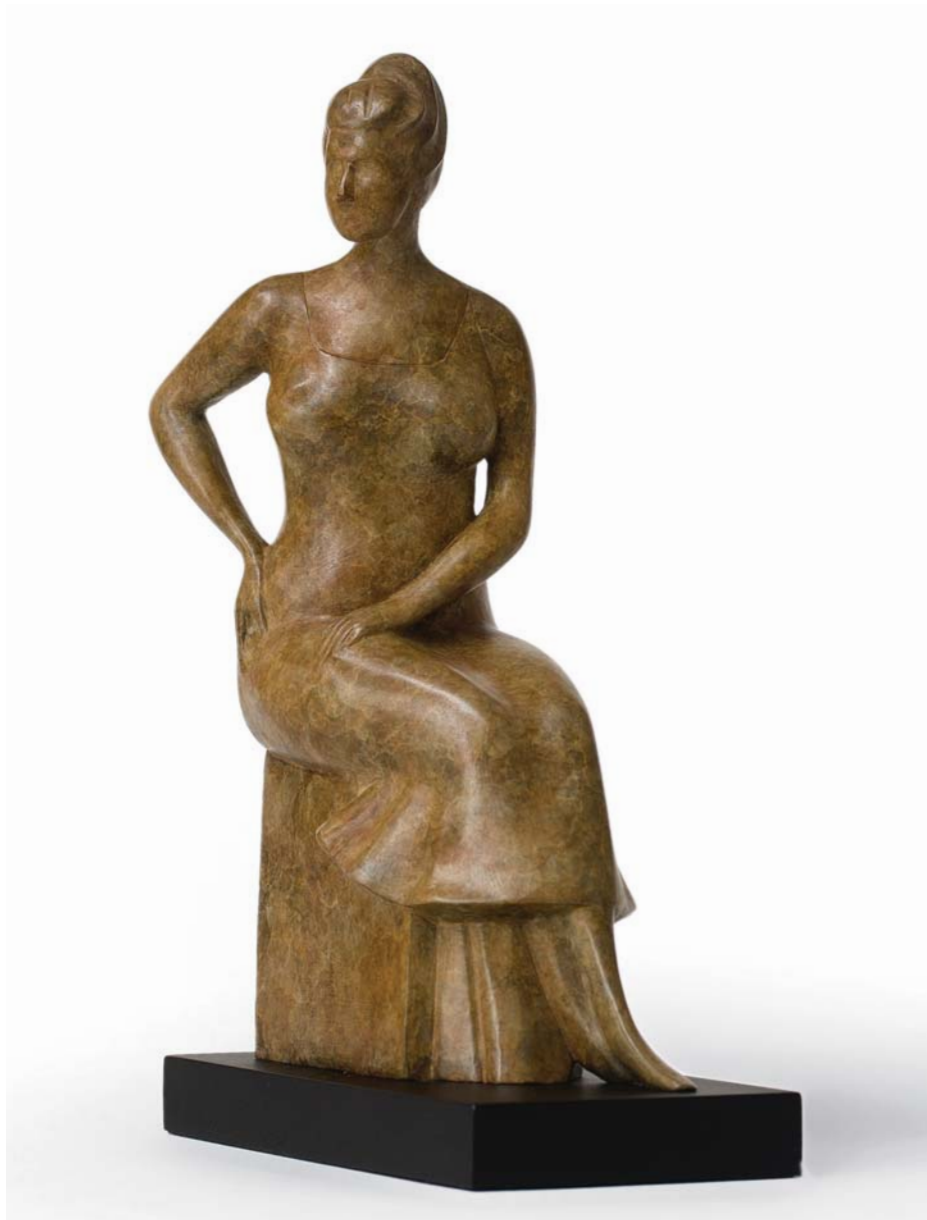
Ballad, Edition of 7, Bronze, Height 18cm



Daydream (front), Edition of 7, Bronze, Height 27cm



Daydream (side view)



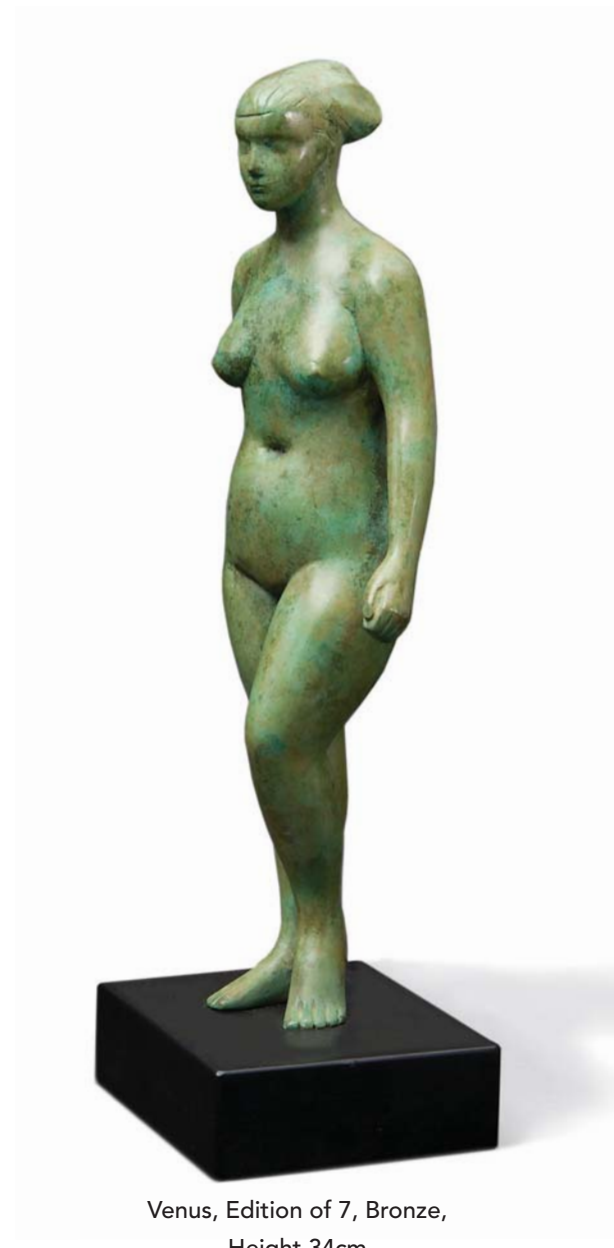
Evening, Edition of 7, Bronze, Height 32cm



Maltese Head, Edition of 7, Bronze, Height 16cm



Sidesaddle, Edition of 7, Bronze, Height 35cm



Venus, Edition of 7, Bronze,
Height 34cm



NIMROD MESSEG

Nimrod Messeg is Iron Man. The Israeli-born, Spain-based artist is one of the world's most skilled and sought-after sculptors in iron. He has nursed a fascination for the metal since he first experimented with it in his artist father's workshop as a child. In time, he learned how to 'tame' the cold hard metal with fire. "The versatility of iron is impressive once you understand its properties and realise its capabilities", he says.

As a child, Nimrod moved with his family all over the world before settling in Marbella in 1999. It was there that he set up his first business selling bespoke furniture in wrought iron. Messeg Design was a big success, but Nimrod eventually committed to a more purely artistic vision.

He remains in thrall to the process. "The observation of burning flames, sparks and galactic activity draws me to the extraordinary, almost celestial dimension of this work with its potential for fantasy and escape," he says. "Looking at the finished piece of art I can see it in its entirety; from humble metal beginnings into new and diverse textures, forms and surfaces."



Onyx, 66 x 30 x 25cm, Iron



Lara, 60 x 31 x 25cm, Iron

ALSO SHOWING...

MISLAV KATALINIC

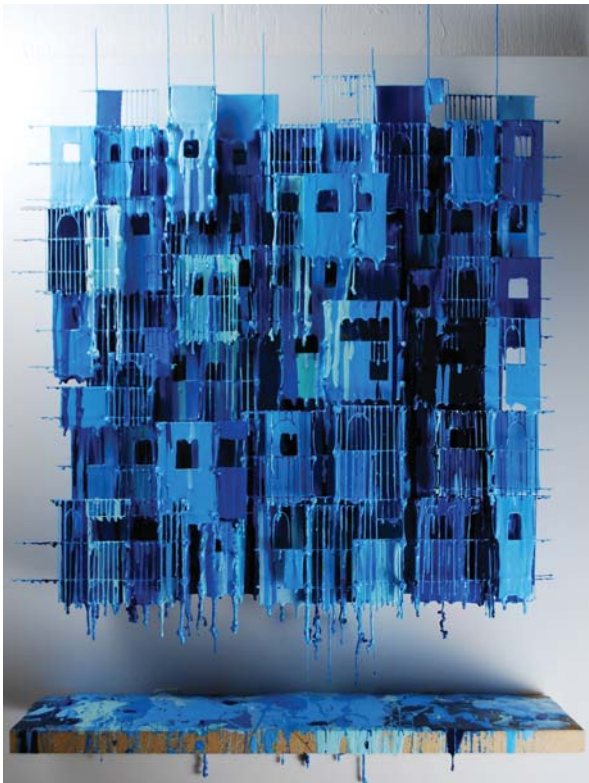
Mislav Katalinić, born in 1979 in Croatia, studied sculpture at the School of Fine Arts in Split under the tutelage of professor Nikola Džaja. His sculptures, created as drawings in space, are made of welded steel, warmed and then submerged in consumed motor oil in order to obtain the desired dark steel patina and protection from corrosion.



Drawing in Space, 158 (L) x 83 (H) x 61 (W)cm

RUSSELL WEST

Born and raised in Portsmouth, West practiced as a graphic artist until 1989. He then moved to South East Asia, spending many years working as an artist in Hong Kong, the Philippines and India before returning to Britain. His intensely coloured, dripping paint artworks draw the eye into a three-dimensional labyrinth of layers and hollows, colours and patterns. West can spend up to a year creating a work, repeatedly applying prepared layers and strips of paint onto pre-arranged wire and pins on a board, then allowing the work to be defined by the natural effects of gravity and the serendipitous movement of the paint.



Little Boxes XI Blue, 64 x 50cm



Tin Flowers VIII



Little Boxes XIV

CATTO GALLERY

100 Heath Street • Hampstead • London NW3 1DP

Tel: +44 (0)20 7435 6660 • www.cattogallery.co.uk • art@cattogallery.co.uk

Opening times: 10am - 6pm Mon - Sat • 12.30pm - 6pm Sunday • and by appointment

Exhibition dates: 3rd - 23rd December 2017