

# CHANGING SEASONS



A MIXED EXHIBITION



Abundance Chartreuse, 90 x 120cm, Acrylic on Canvas

Front Cover: South End Green, 112 x 77cm, Oil on Canvas (Julian Vilarrubi), Downstream Path II, 105 x 120cm, Oil on Canvas (Nick Bodimeade),  
The Physic Garden, 70 x 60cm, Oil on Linen (Suzy Fasht), Abundance Magenta, 90 x 120cm, Acrylic on Canvas (Mark Godwin),  
Charm Offensive, 61 x 122cm, Oil on Board (Annie Ovenden), Melt Water, 60 x 42cm, Oil on Canvas (Haydn Cottam)

# CHANGING SEASONS

A Mixed Exhibition featuring

Annie Ovenden

Haydn Cottam

Julian Vilarrubi

Suzy Fasht

Mark Godwin

Nick Bodimeade

CATTO GALLERY

100 Heath Street • Hampstead • London NW3 1DP

Tel: +44 (0)20 7435 6660 • [art@cattogallery.co.uk](mailto:art@cattogallery.co.uk)

Prices can be viewed on our website  
along with additional images.

# ANNIE OVENDEN

Annie Ovenden's name is carved into the history of English 20th and 21st century painting thanks to her membership of the hugely influential and much-loved Brotherhood of Ruralists.

A painter of huge technical assurance and enormous character, she was educated at The Royal Wanstead School and then at High Wycombe School of Art, gaining an NDD in Book Illustration and Graphic Design in 1965. She worked as a graphic designer and painter in London for several years before moving to Cornwall in 1973.

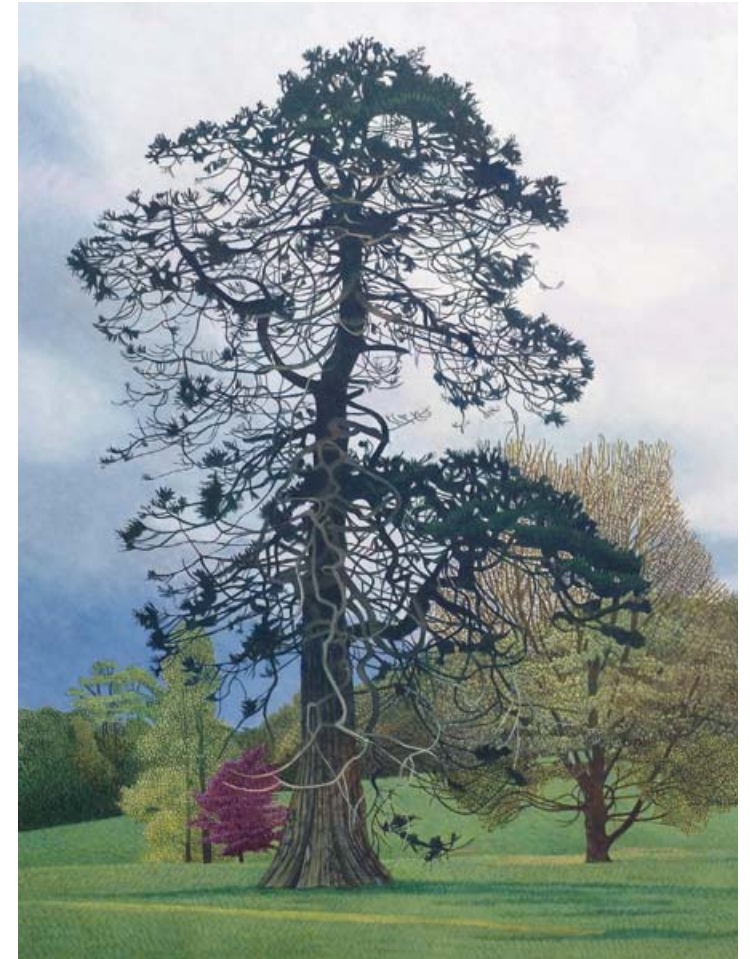
She has had many solo exhibitions and was an honorary member of the South West Academy of Fine and Applied Arts. Currently she is a member of The St. Ives Society of Artists and The Arborealists. For four years she worked with London's Hampstead Garden Opera creating sets for *The Magic Flute*, *Hansel and Gretel* and *La Traviata*.



Charm Offensive, 61 x 122cm, Oil on Board



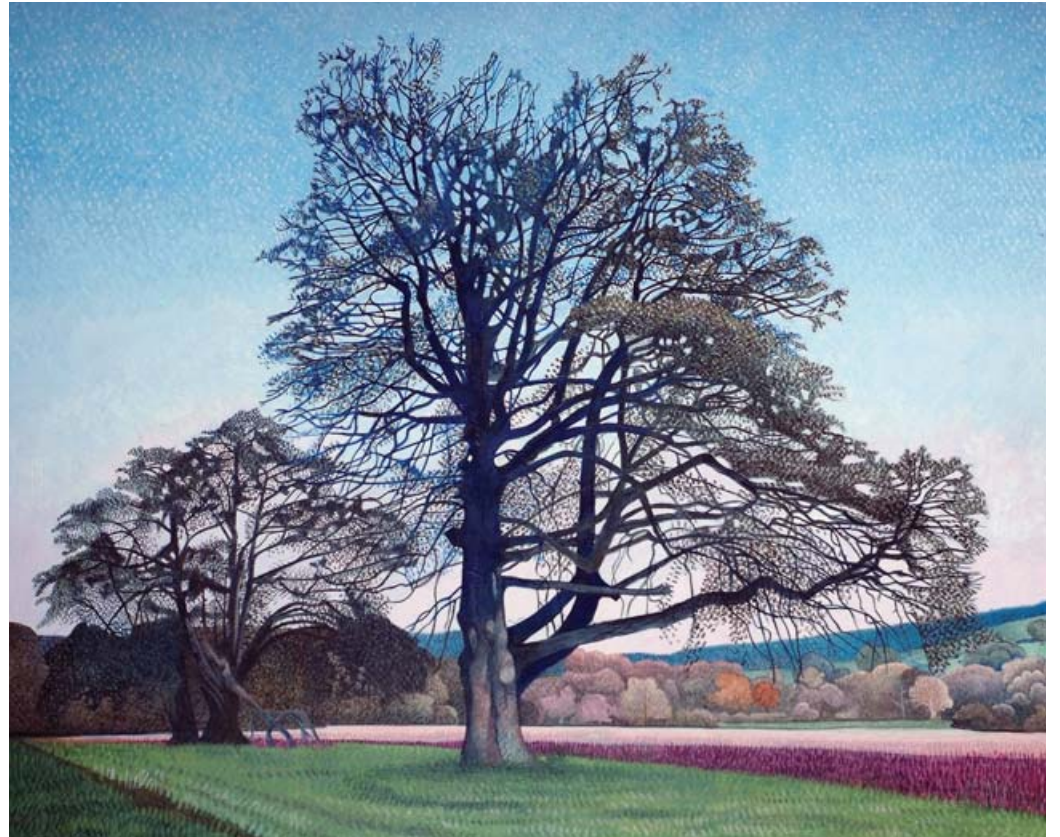
Primrose Hill, Spring Time, 41 x 53cm Oil on Board



Fir at Delamore, 61 x 48cm, Oil on Board



Dusk, 34 x 35cm, Oil on Board



Boconnoc View, 38 x 48cm, Oil on Board



Autumn at Wenmouth, 25 x 30cm, Oil on Board



Giant Oak In New Forest, 25 x 30cm, Oil on Board

# HAYDN COTTAM

After graduating from St. Martin's College of Art in the 80s, Haydn concentrated on figurative work. In 1990 he was commended in the BP Portrait Award and in 1991 the BP Travel Award. In 1995 he won The Carole Foundation at the Mall Galleries in London.

Haydn's paintings often depict landscapes, which come from the experience of walking or cycling. His more recent work has an intimate feel and sometimes implied narrative created through atmospheric light, a sense of foreboding or contemplation. This is a formal construct, which pays tribute to the landscape that he has either journeyed through or delighted in.



The Nevill, 46 x 62cm, Oil on Canvas





Nine Pillboxes, 120 x 120cm, Oil on Canvas



Ancient Olive Grove, 50 x 70cm, Oil, on Canvas



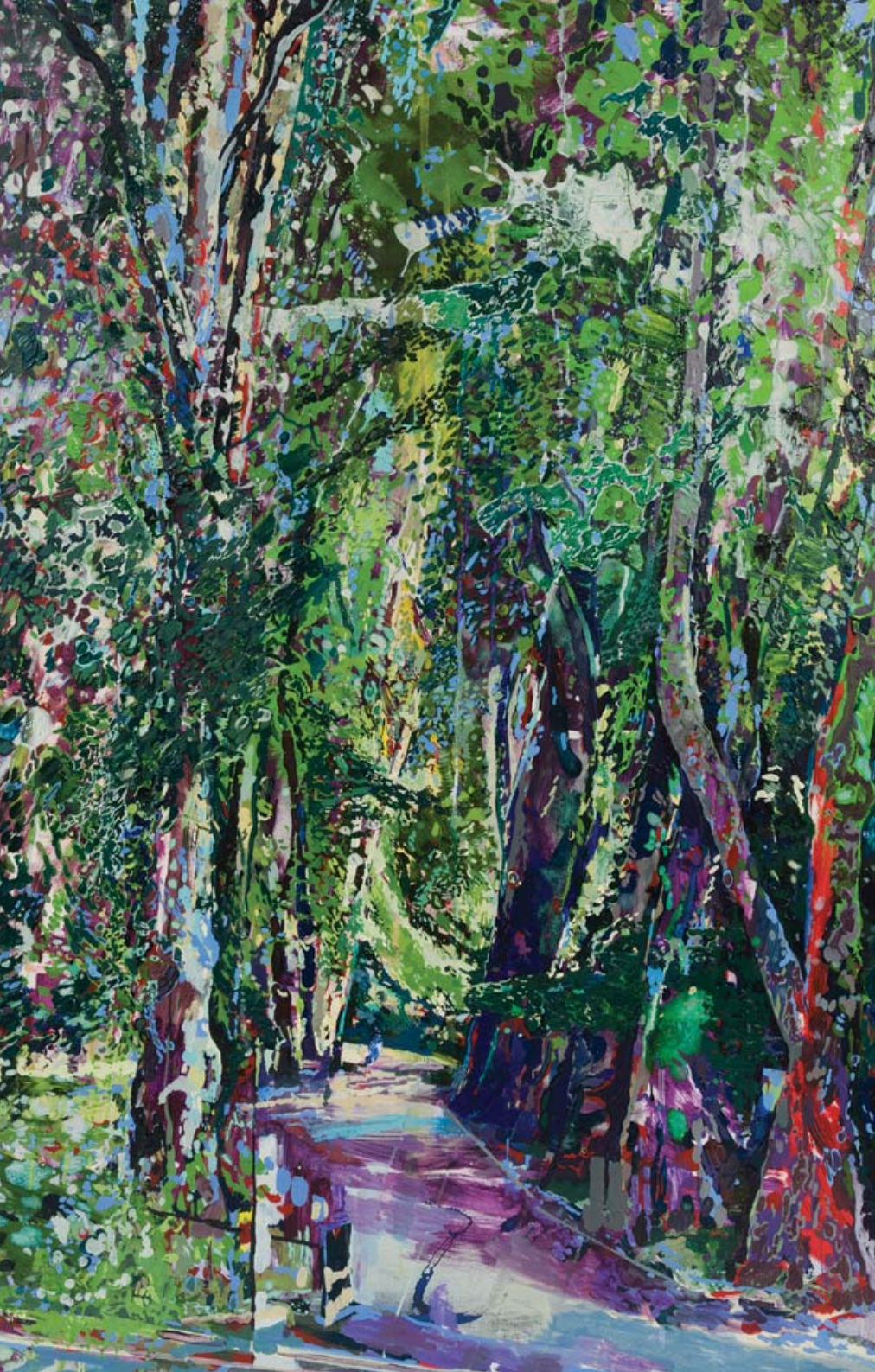
Sussex Rock, 46 x 62cm, Oil on Canvas



Snowman, 46 x 62cm, Oil on Canvas



Melt Water, 60 x 42cm, Oil on Canvas

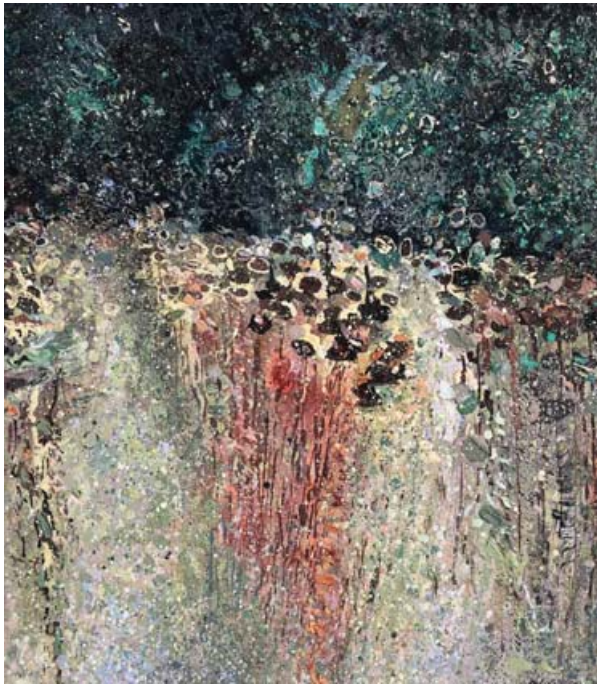


# JULIAN VILARRUBI

Julian specialises in fine art, working with and from the figure, digital drawing and painting. He has a degree in Fine Art from Newcastle University, has studied at the V&A and is himself a lecturer in portraiture, design and life drawing. His landscapes are dynamic and vibrant. They are largely abstract, yet suggest a real sense of atmosphere and the feel of a place.

Julian has exhibited extensively in the UK and elsewhere in Europe. His works are included in the collections of Leeds City Council, TSB Group London Citibank, and The National Trust, amongst others and are in private collections in Europe and the USA.

South End Green, 112 x 77cm, Oil on Canvas



Italian Field, 38 x 33cm, Oil on Canvas



Level Trees, 137 x 132cm, Oil on Canvas



Hampstead Heath Pond, 40 x 65cm, Acrylic on Paper



Hampstead Heath Pond II, 32 x 39cm, Graphite on Paper



Hampstead Heath Pond I, 32 x 39cm, Graphite on Paper



Trees on the Heath, 84 x 54cm, Acrylic on Paper



Inside the Shadows, 84 x 54cm, Acrylic on Paper



Pine at the Top, 84 x 54cm, Acrylic on Paper

# SUZY FASHT

Suzy Fasht was born in London in 1964 and studied at the Royal Academy Schools and Wimbledon School of Art. She currently lives and works on the edge of Dartmoor in Devon. An Associate member of the Royal Watercolour Society, her paintings have been exhibited around the UK including the RA Summer exhibition, the Sunday Times Watercolour competition and she was shortlisted for the Lyn Painter-Stainers prize.

Suzy paints in oil, egg tempera or watercolour. The different qualities of each paint means a different method used. Her main focus is to balance the tangled chaotic aspect of nature with its inherent pattern, harmony and symmetry. The loss of native wildflowers and insects is an ongoing subject, as is a feeling for the preciousness of the overlooked more modest plants to be found in our hedgerows and inbetween paving stones.



A Field of Sunflowers, 40 x 80cm, Oil on Linen





Wild Flowers, 60 x 60cm, Oil on Linen



The Physic Garden, 70 x 60cm, Oil on Linen



By the Sea, 81 x 100cm, Oil on Canvas



Summer Stems in a Milk Bottle, 60 x 60cm, Oil on Linen



Wildflowers by a Window, 80 x 100cm, Oil on Linen

# MARK GODWIN

Born in Birmingham in 1957, Mark graduated from the Royal College of Art in 1982. The motif of landscape has been a major aspect of his paintings for over 30 years, and he is greatly influenced by the 18th century Romantic notion of the Sublime, and our longing for an emotional encounter with nature. There is a nostalgia, and timelessness about his work, and a conscious blurring of the boundaries between abstraction, and representation.

Mark has exhibited regularly in the UK and abroad, including numerous International Art Fairs. His artworks feature in many corporate collections and are purchased by private collectors worldwide.



Rumble, 110 x 140cm, Acrylic on Canvas



Outrage, 76 x 91cm, Acrylic on Canvas



Outburst, 76 x 91cm, Acrylic on Canvas



Abundance Magenta, 90 x 120cm, Acrylic on Canvas



Abundance Turquoise, 90 x 120cm, Acrylic on Canvas



Abundance Gamboge, 90 x 120cm, Acrylic on Canvas



Downstream Path II, 105 x 120cm, Oil on Canvas

# NICK BODIMEADE

Over the last 18 months Nick has focused almost exclusively on his local landscape – the flood plain of the river Ouse where it cuts through the South Downs.

He spends part of each day walking and photographing the landscape. Once in the studio the photos are examined and the landscape goes through a secondary exploration with pixels and paint. He says: “My aim is that these paintings with their exaggerated physical gestures and with their evidence of touch and movement in their sloshy paint speak to the viewer of our shared, engaged and embodied experience of outside space.”





Fork Path II, 100 x 110cm, Oil on Canvas



Bevern Pads, 90 x 100cm, Oil on Canvas



The Downstream Path, 110 x 130cm, Oil on Canvas



# CATTO GALLERY

100 Heath Street • Hampstead • London NW3 1DP  
Tel: +44 (0)20 7435 6660 • [www.cattogallery.co.uk](http://www.cattogallery.co.uk) • [art@cattogallery.co.uk](mailto:art@cattogallery.co.uk)  
Opening times: 10am - 5.30pm Mon - Sat  
12pm - 5pm Sunday • and by appointment

Exhibition dates: 7th – 30th October 2021